

FEMA National Watch Center

Daily Operations Briefing

Saturday, August 19, 2023

8:30 a.m. ET



FEMA

National Current Ops / Monitoring

New Significant Incidents / Ongoing Ops

- Wildfires – HI
- Hurricane Hilary Preparations – California
- Tropical Activity Preparations - Atlantic

Hazard Monitoring

- Heavy rain and flash flooding –southern CA to Southwest and Central Great Basin
- Tropical Activity:
 - Atlantic:
 - Disturbance 1: High (70%); Disturbance 2: Low (30%)
 - Disturbance 3: Medium (40%); Disturbance 4: Med (50%)
 - Eastern Pacific:
 - Hurricane Hilary (CAT 4)
 - Disturbance 1: Low (20%)

Disaster Declaration Activity

- Request – Major Disaster Declaration – KY
- FMAGs Approved – MT and WA (x2)

Event Monitoring

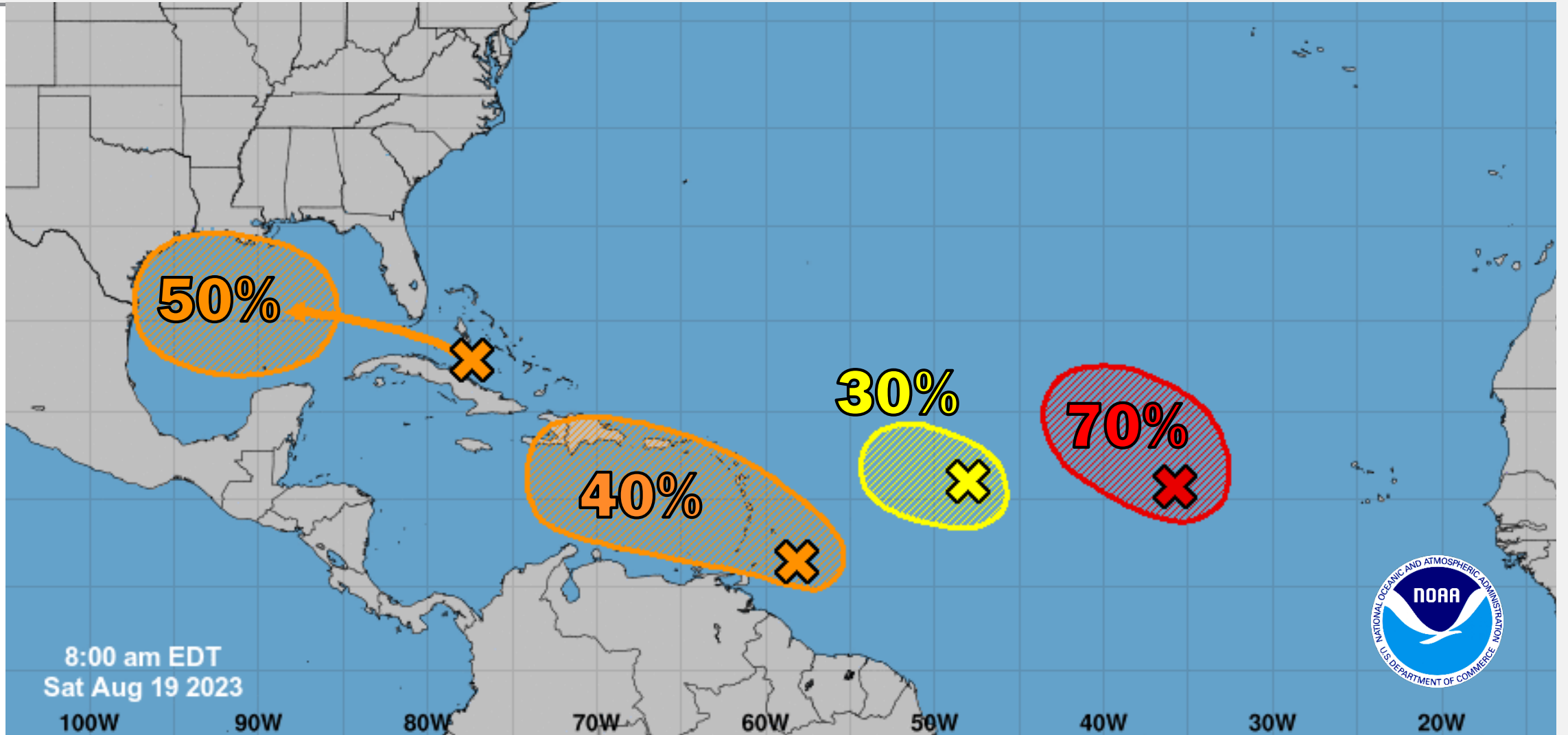
- No significant events



FEMA

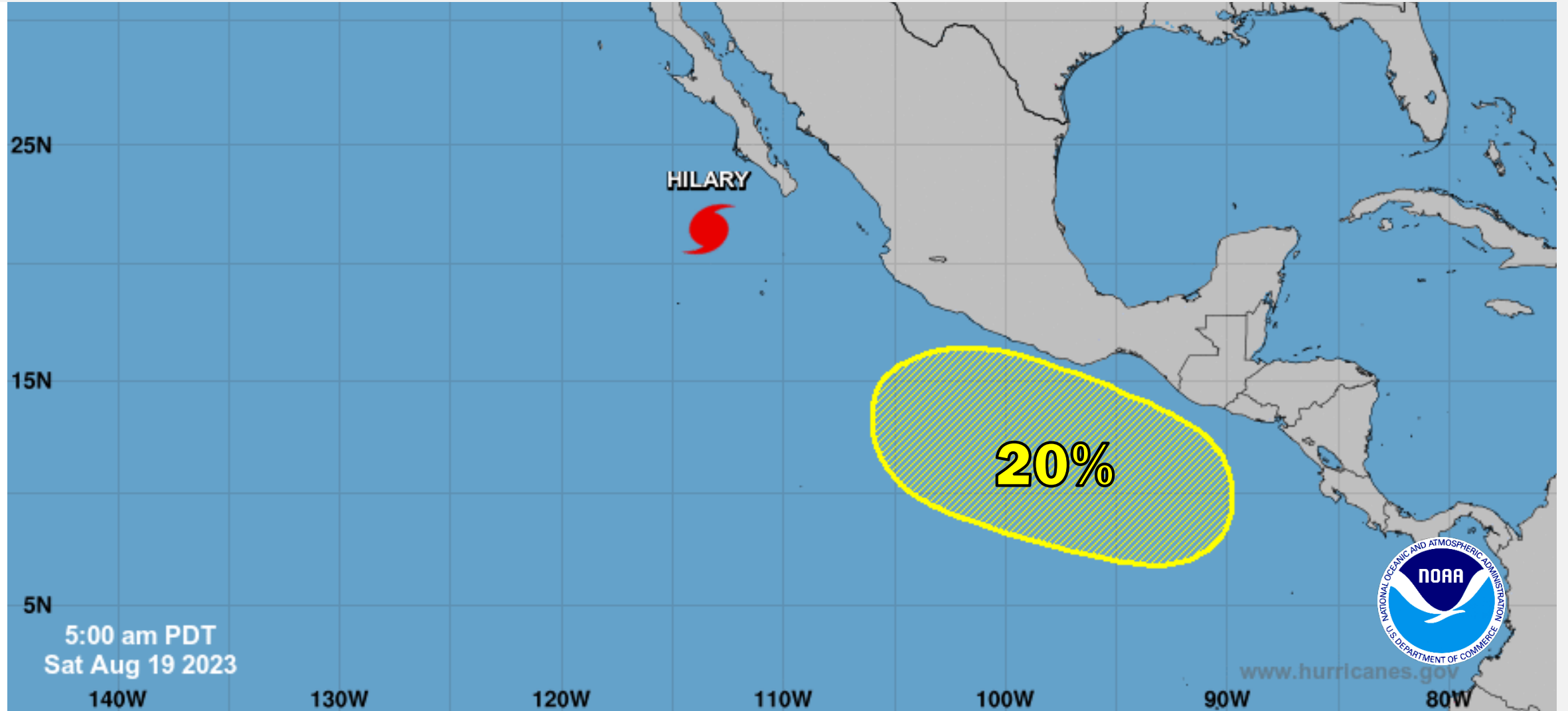
Atlantic Overview

TROPICAL OUTLOOK



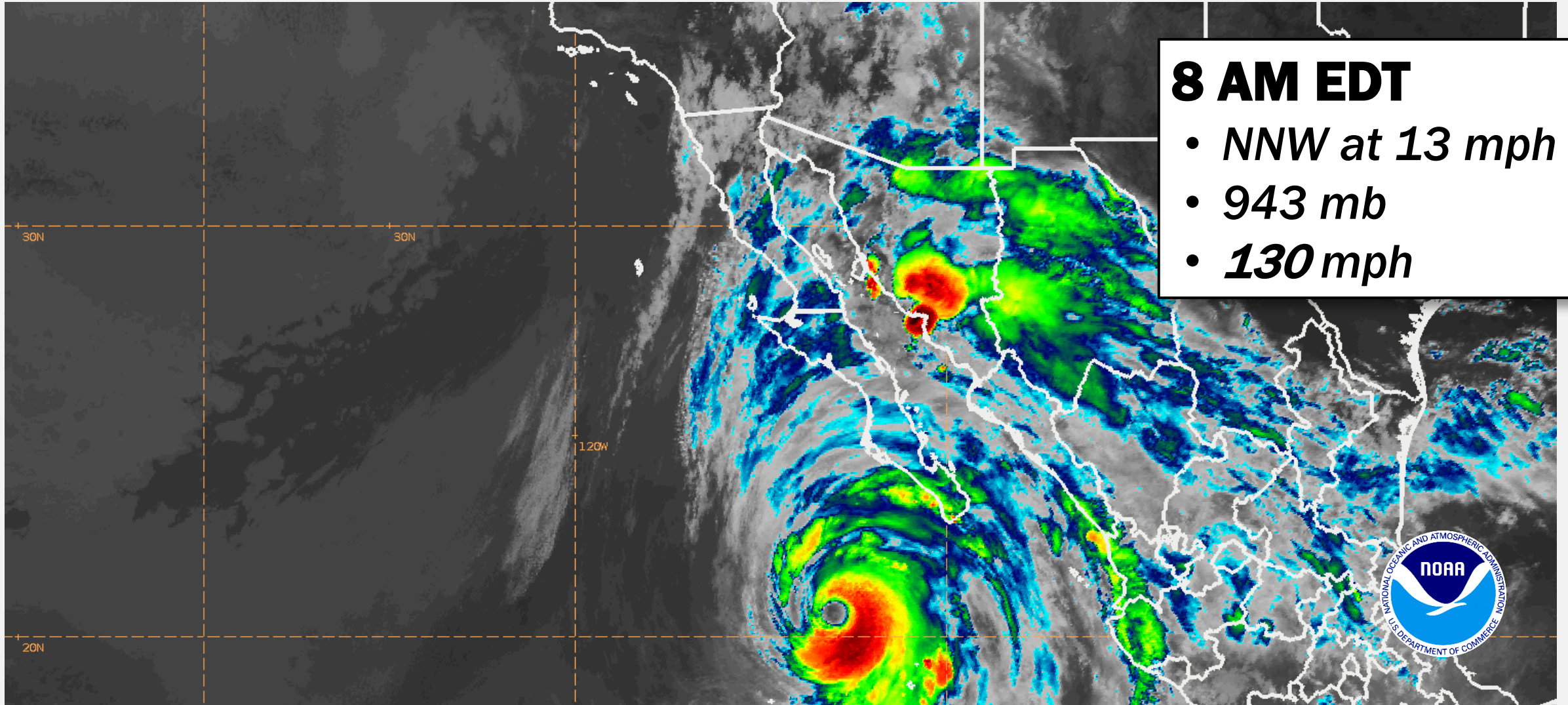
East Pacific Overview

TROPICAL OUTLOOK



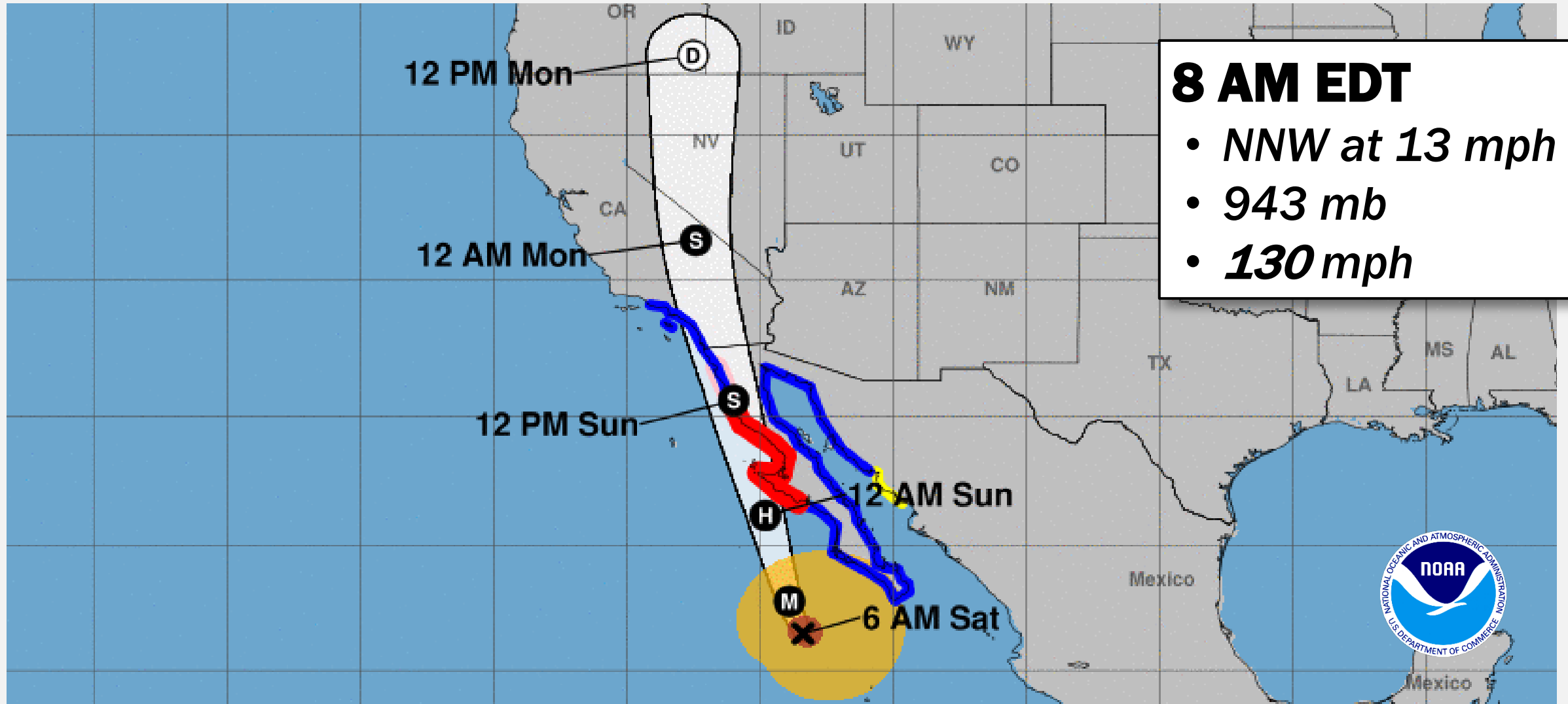
Hurricane Hilary

SATELLITE LOOP



Hurricane Hilary

FORECAST TRACK



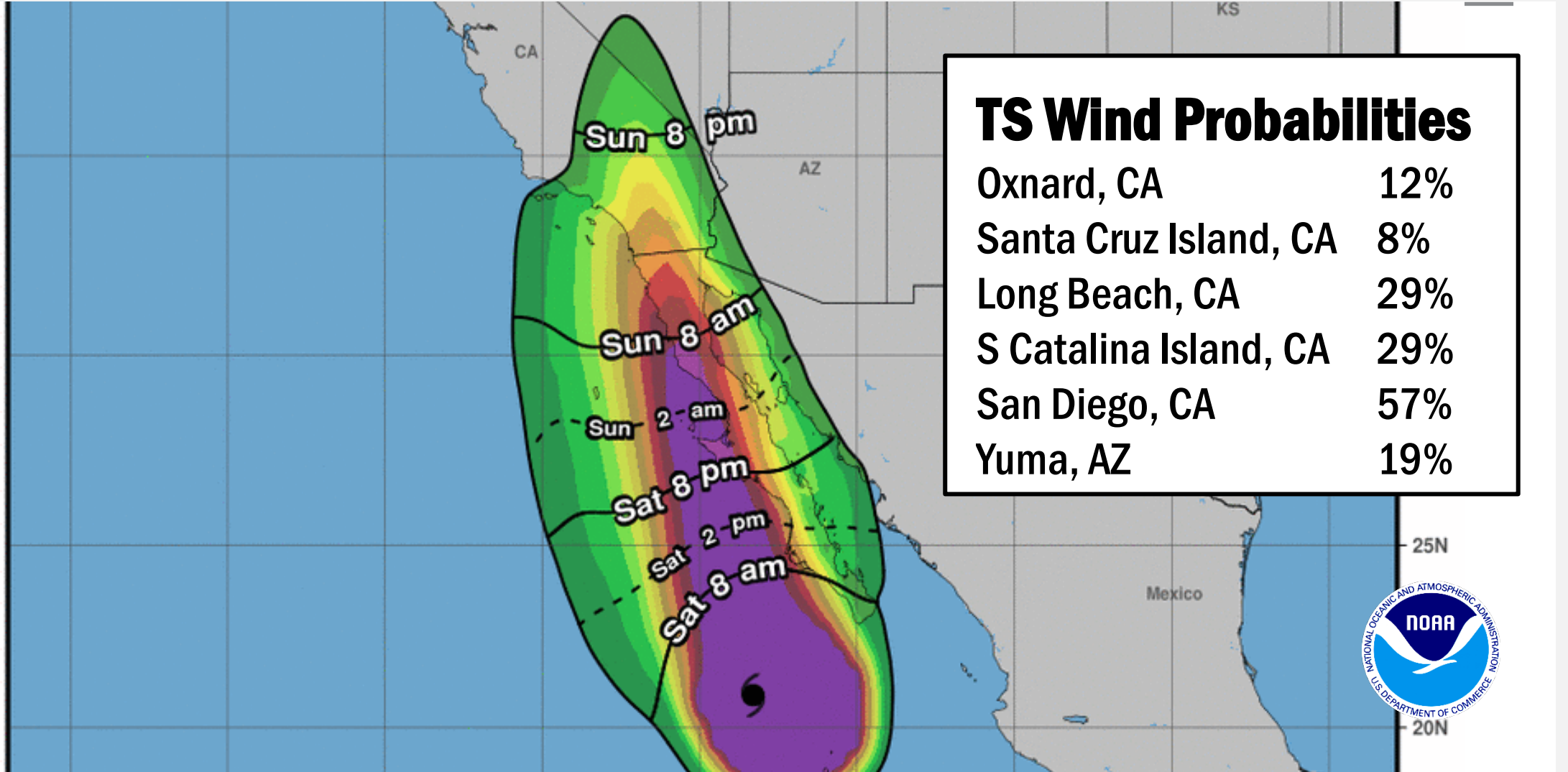
Hurricane Hilary

WIND WARNINGS



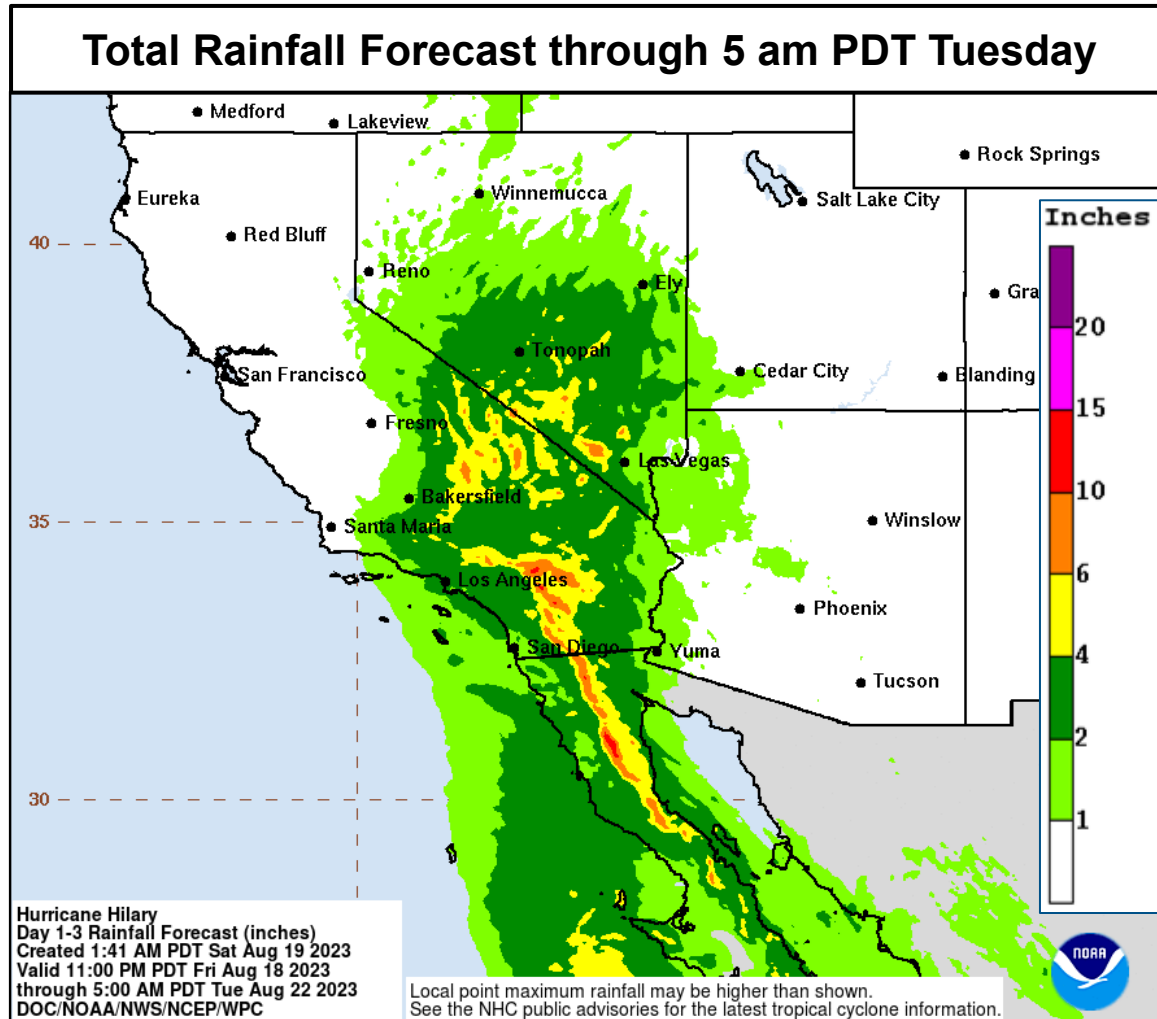
Hurricane Hilary

MOST LIKELY ARRIVAL OF TS WINDS

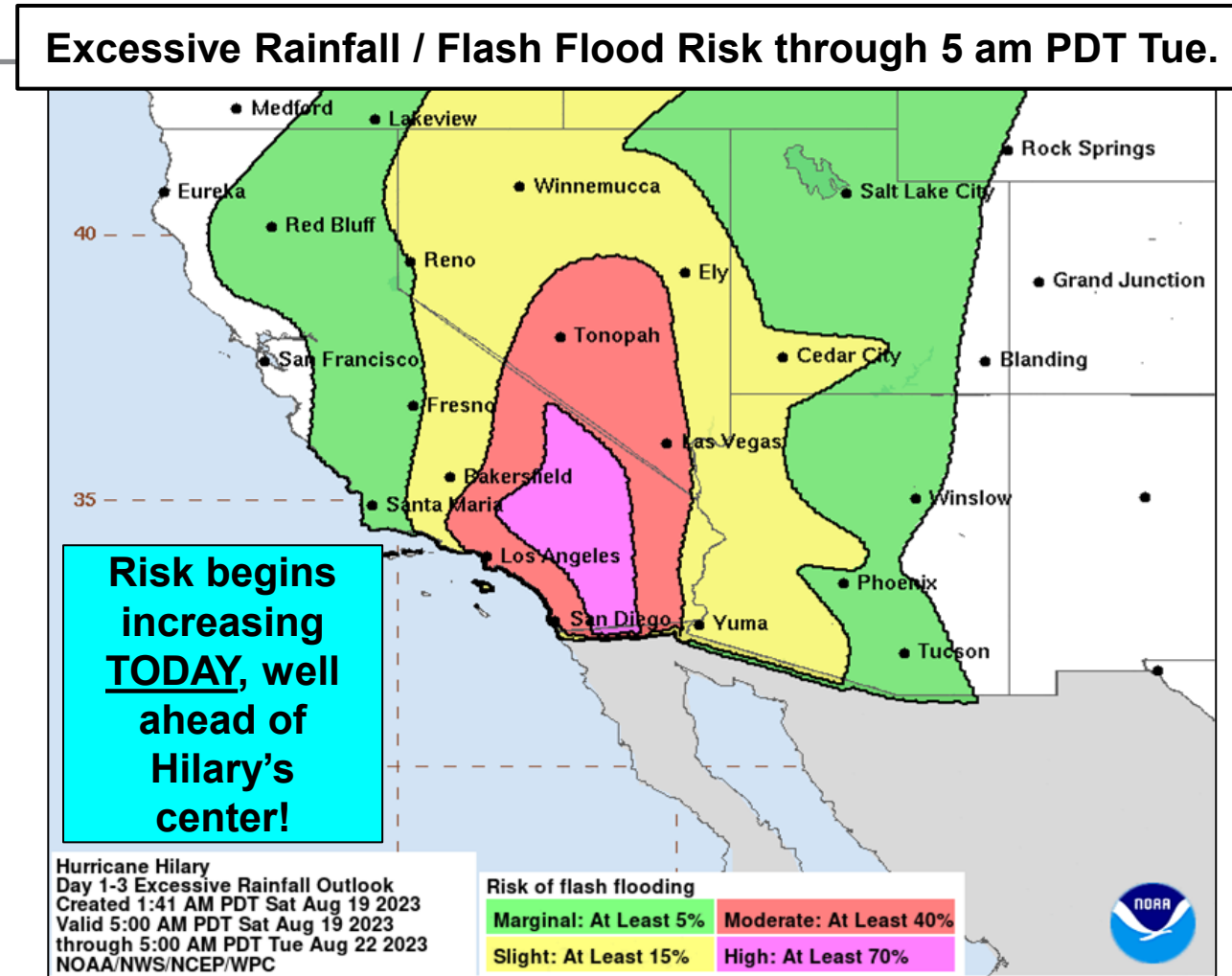


NWS Weather Prediction Center

Updated 6 am EDT, Saturday, Aug. 19, 2023 - Hurricane Hilary Latest Rainfall Forecasts and Information



- **Southern California and southern Nevada:** 3-6 inches, with isolated 10 inches
- **Rest of the Western U.S.:** 1-3 inches



- **HIGH RISK** has expanded in S CA, now includes ~4.3 million people and more of the Inland Empire, and Coachella and Imperial Valleys
- Flash, urban, and arroyo flooding is expected, with dangerous and locally catastrophic impacts likely

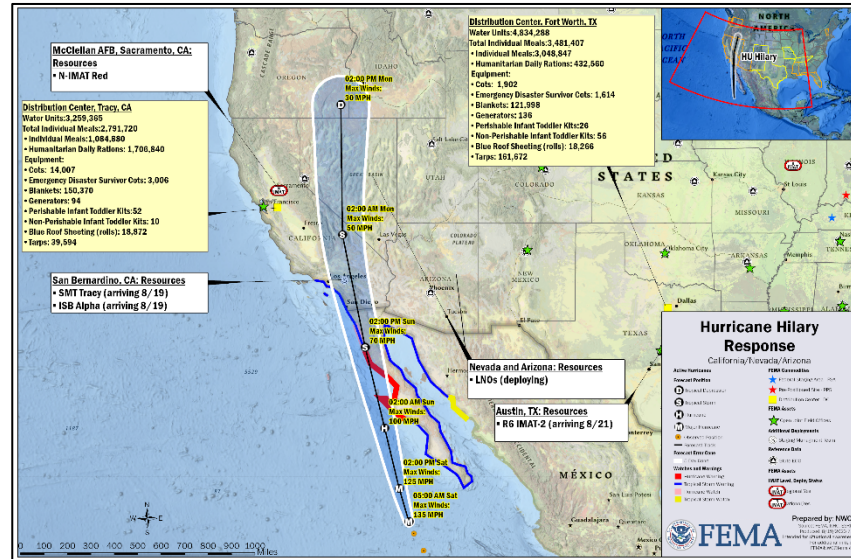
Hurricane Hilary – Preparations – California

Current Situation:

FEMA continues to support the ongoing response and recovery operations for potential flood impacts in the southwestern US from Hurricane Hilary. Hilary is expected to weaken to a tropical storm by late Sun before reaching southern CA. Tropical storm conditions are expected to begin in southern California on Sunday; Tropical Storm Warnings are in effect from the CA/Mexico border to Point Mugu and for Catalina Island.. Current threats, considerable rain, and flooding may affect the Southwest border mission.

Potential Impacts:

- CAL OES has published three Priority Areas of Concern; these areas are likely to experience flooding, downed power poles leading to power outages, and compromised transportation corridors
- San Diego: Significant localized flooding is likely
 - Palm Springs: Flash flooding, significant to catastrophic flooding likely; debris flows, and structure damage possible
 - Southern Desert: Flash flooding and significant to catastrophic flooding likely with an entire years' worth of rain in a 24-to-36-hour period beginning this evening; rainfall totals between 5-9 inches in many locations, up to 12 inches in eastern facing slopes



State / Local Response:

- CA EOC at Partial Activation (Flooding/Heat)
- NV EOC at Partial Activation (Flooding)

FEMA / Federal Response:

- Region IX:
 - LNOs deploying to NV and AZ
- FEMA HQ
 - NRCC is activated, day shift only
 - National IMAT Red deployed to CA
 - National IMAT Gold is on Alert
 - Staging Management Team (SMT) and Incident Support Base (ISB) teams deploying to CA
 - Disaster Survivor Assistance Strike Team (DSA) deploying to CA
 - NORTHCOM JOC monitoring with DSCA assets in the area

Lifelines:

Safety and Security: Pre-emptive Dam releases and increased monitoring across southern California Dams

Food, Hydration, Shelter: California HCD and CalTrans working to identify potential shortfalls and sheltering options for mobile homes and homeless populations

Transportation: Ports of Los Angeles and Long Beach halted anchorages outside of the breakwater



FEMA

Wildfires – Hawaii

Maui



Current Situation: FEMA and federal partners continue to support the state of Hawaii in response and recovery efforts from Hawaii Wildfires. Mission priorities remain focused on Search & Rescue, fire containment, and damage assessments in the impacted area (Maui County). Congregate shelter numbers are steadily declining as survivors connect with temporary housing solutions, such as Transitional Shelter Assistance (TSA) and non-congregate shelters. Federal ESF 8, and State healthcare providers, are ensuring uninsured survivors' medications remain accessible

Lifelines Impacts: (FEMA Region IX SLB #9 as of 4:30 a.m. ET Aug 19)

Safety and Security:

- Phased re-openings this week for most public schools
- Total of **94 (+10)** deployed HHS responders in support of Hawaii Wildfires – Maui: **90 (+12)**; Oahu **4 (-2)** (HHS Force Laydown, 6:44 p.m. ET Aug 18)
- Multiple USAR assets on the ground continuing secondary low searches and beginning transition to secondary high searches in affected area
- Burned Area Emergency Response (BAER) team will active to address post-fire emergency stabilization, public safety, and mitigation efforts regarding post-fire damages in Maui County

Food, Hydration, and Shelter:

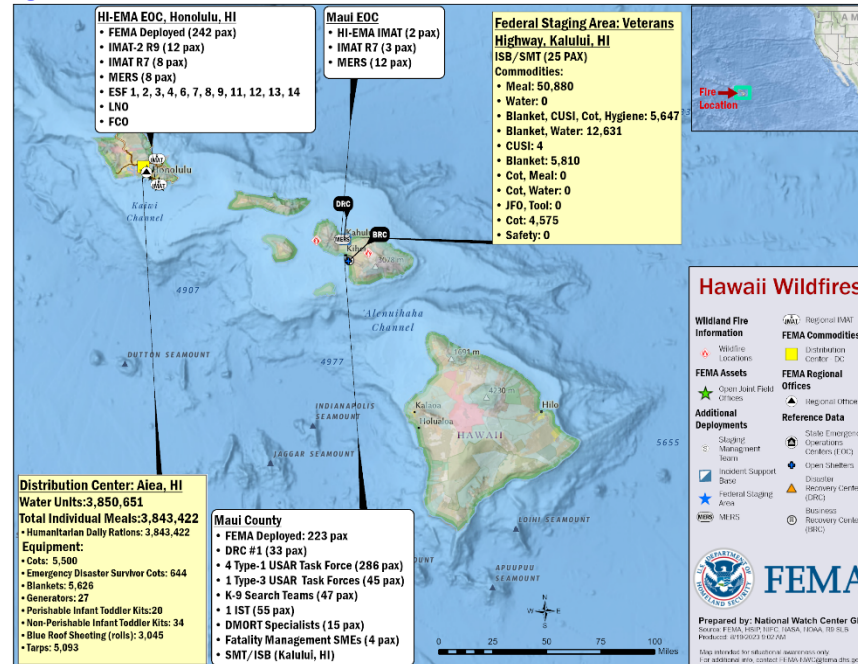
- Shelters: Maui County: **14 (+2)** shelters open w/ **1,224 (+466)** occupants
- 47** feeding locations in Maui coordinated by the Salvation Army

Health and Medical:

- 114 (+3)** confirmed fatalities
- 67 patients treated with fire-related injuries at Maui Memorial Center
- 36 DMORT/Victim Information Center (VIC) specialists on ground in Maui DMORT has made **113** recoveries, **47(+19)** exams completed, and **52** identifications. (SOC IM SLB, 7:22 p.m. ET, Aug 18)
- VIC completed **207 (+7)** family interviews, **70 (+4)** DNA swabs, (SOC IM SLB, 7:22 p.m. ET, Aug 18)
- New Family Assistance Center (FAC) relocated is fully operational (SOC IM SLB, 7:22 p.m. ET, Aug 18)

Water Systems:

- State ESF 10 personnel in conjunction with Federal partners will resample sites and perform additional testing
- USACE conducting assessments for back up generator installs at 7 locations: 3 water wells and 4 water systems booster pumps



Energy:

- 2k (3%) customers remain without power in Maui

Communications:

- Maui County:
 - 4 (-1) cell towers offline; industry partner personnel continue to restore cellular service in West Maui: **81% (+5)** of cell towers restored
 - 2,194 landline/cable subscribers have been restored
 - Permanent fiber services repaired and restored between Kahana and Kapalua Airport area; cellular and internet services back online for residents in the area

Transportation:

- 3 Temporary Flight Restrictions (TFR) in effect for Maui County
- Access limited for Honoapiʻilani and Lahaina Bypass Roads for safety reasons
- USCG Safety Zone remains in effect; access authorized on a case by case basis
- Bus service resumed except for 4 West Maui routes which remain suspended

State / Local Response:

- HI state EOC at Full Activation / Gov declared a SOE

FEMA / Federal Response:

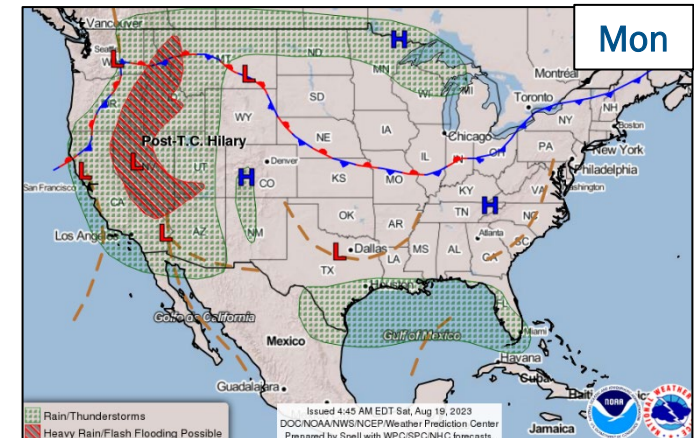
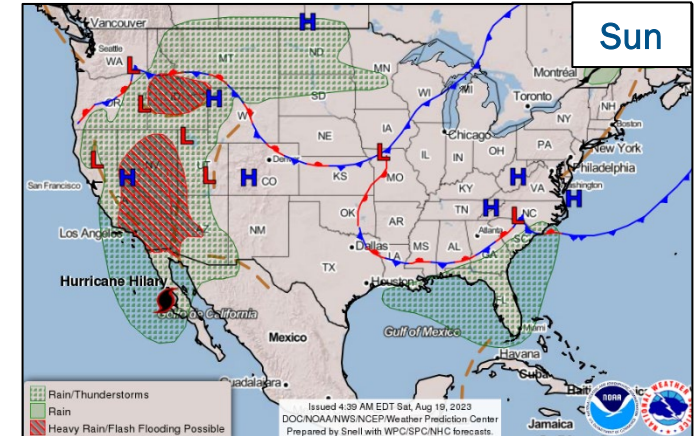
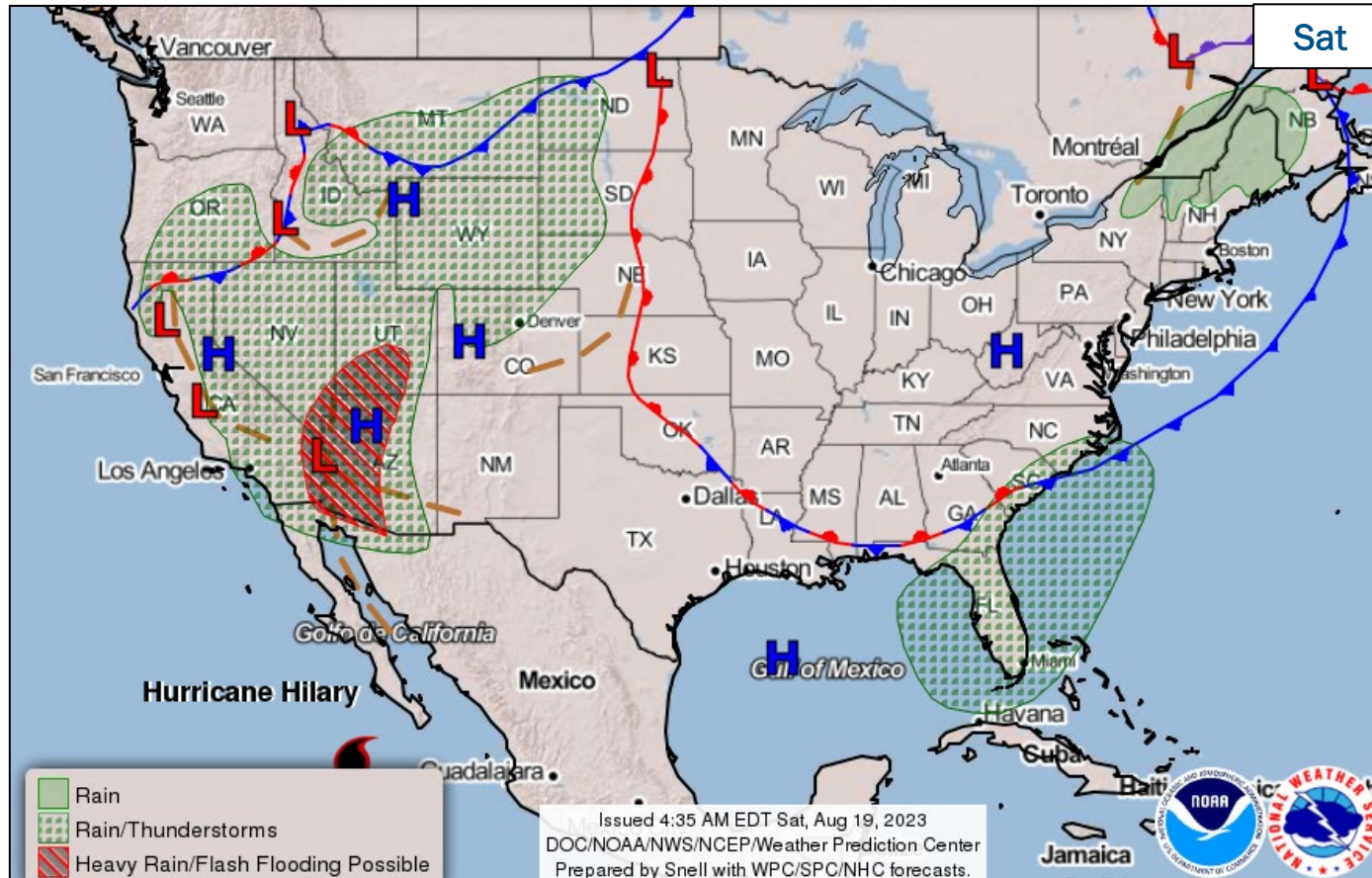
- FEMA-4724-DR-HI approved Aug 10
- Region IX RWC continues to monitor
 - IMAT-2 with ESFs 1 through 15 and DCE deployed to HI
 - 1 LNO deployed to HI EOC (Oahu), 1 LNO in Maui
 - 1 FCO in Maui, 1 in Oahu
- HQ:
 - Region VII IMAT deployed to HI
 - US&R: Blue IST, 4 NIMS Type 1 task forces, 1 NIMS Type 3 task force, 2 Mission Ready Packages - Canine Search, and 35 single resource Canine Search Teams
 - MERS personnel deployed to HI
 - Staging Management Team (SMT) and Incident Support Base (ISB) team deployed to Maui
 - Disaster Recovery Center (DRC) open
 - NWC continues to monitor in coordination with Region IX; the next update will be in the 5:00 p.m. ET FEMA National Situation Report



FEMA

National Watch Center

National Weather Forecast



FEMA

National Watch Center

River Road East Fire–Montana

Fire Name (Co., ST)	FMAG #	Acres Burned	Percent Contained	Evacuations	Structures (Homes / Other)			Fatalities / Injuries
					Threatened	Damaged	Destroyed	
River Road East Fire (Sanders County, MT)	XXXX-FM-MT	5,367	0%	M: 416	H: 0	H: 0	H: 0	0 / 0
				V: 0	O: 627	O: 0	O: 0	

Situation:

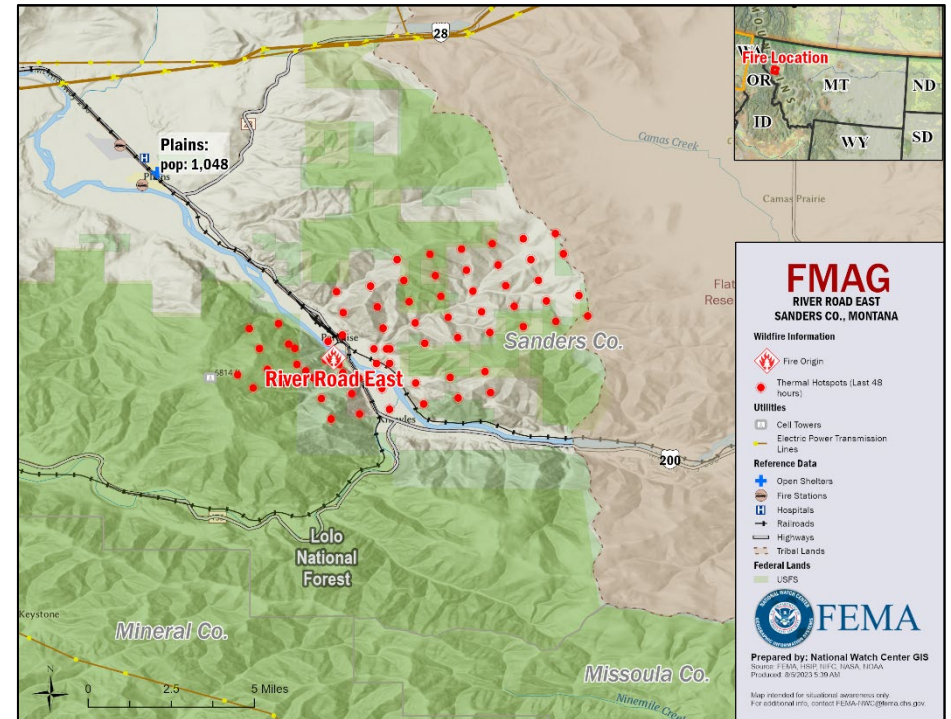
- The fire is burning on state, federal and private land in and around the community of Paradise in Sanders County; major and minor subdivisions likely to be impacted
- Threatening residences in Paradise (166 people) and surrounding area (250 people)
- Also threatening transportation systems MT rail Link RR, MT Highway 200 (currently closed), MT Highways 35 and 28, and City Road 382, watershed, irrigation, fishing streams and spawning sites, wildlife, environmental resources, numerous roads and bridges, and numerous utilities (communication sites, power, and phone lines)

State / Local Response:

- MT EOC Monitoring

FEMA / Federal Response:

- FMAG approved August 19
- Denver MOC will continue to monitor
- FEMA NWC will continue to monitor in coordination with FEMA Region VIII.



FEMA

Gray Fire – Washington

Fire Name (Co., ST)	FMAG #	Acres Burned	Percent Contained	Evacuations	Structures (Homes / Other)			Fatalities / Injuries
					Threatened	Damaged	Destroyed	
Gray Fire (Spokane County, WA)	XXXX-FM-WA	3,000	0%	M: 2,000	H: 2,178	H: 0	H: 0	0 / 0
				V: 0	O: 0	O: 0	O: 0	

Situation:

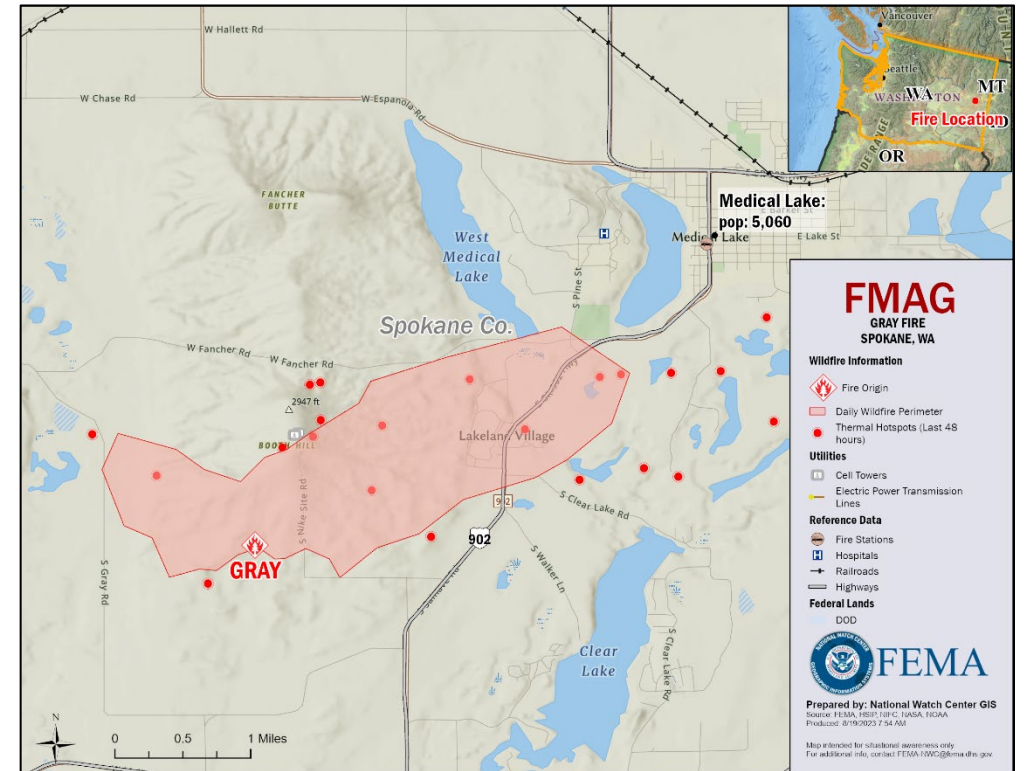
- The fire began on August 18 and is burning on state and private land in and around the community of Medical Lake (total pop 5,016), 4 four miles southwest of Fairchild AFB (pop 4,896), and 15 miles southwest of Spokane (pop 230,160)
- Threatening 2,178 primary homes, hospitals, schools, public and privately-owned communication towers and power lines, recreational areas, parks, campgrounds, Fairchild Air Force Base, and Spokane International Airport
- Mandatory evacuations for 2,000 homes, voluntary evacuations for 178 homes

State / Local Response:

- WA at Partial Activation (Fire Season)

FEMA / Federal Response:

- FMAG approved August 19
- Region X / Bothell MOC will continue to monitor
- FEMA NWC will continue to monitor in coordination with Region X



FEMA

Oregon Fire – Washington

Fire Name (Co., ST)	FMAG #	Acres Burned	Percent Contained	Evacuations	Structures (Homes / Other)			Fatalities / Injuries
					Threatened	Damaged	Destroyed	
Oregon Fire (Spokane, WA)	XXXX-FM-WA	2,500	0%	M: 1,292	H: 371	H: 0	H: 0	0 / 0
				V: 0	O: 0	O: 0	O: 0	

Situation:

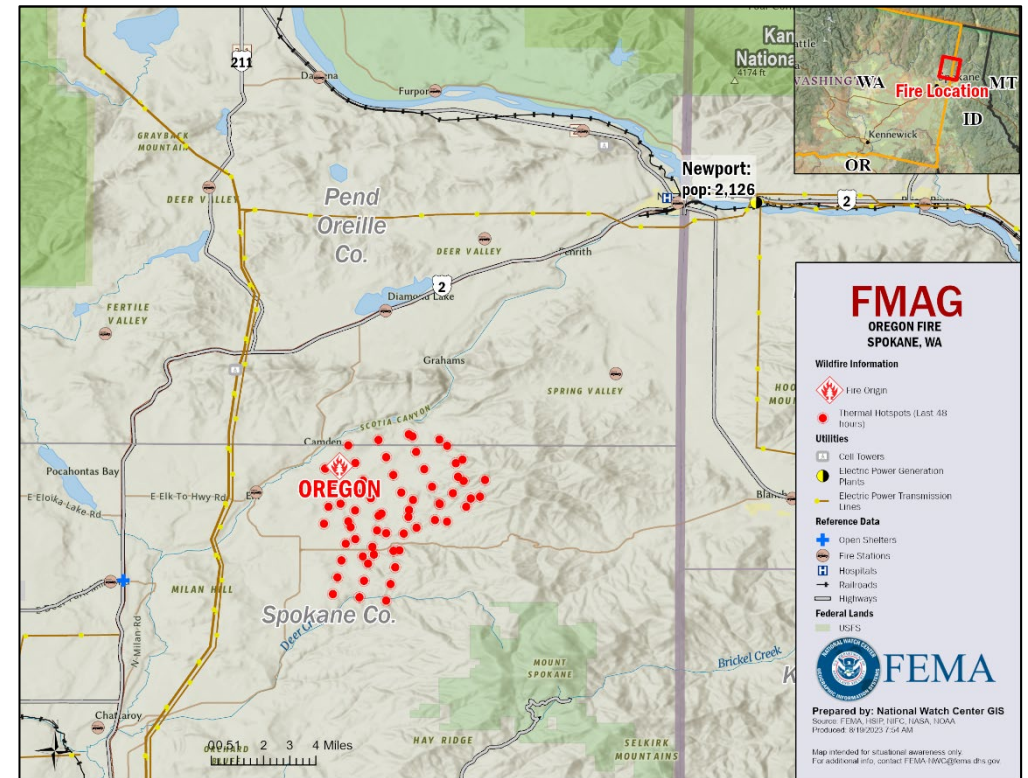
- The fire began on August 18 and is burning on stage and private land around the Pend Oreille County border
- Threatening 371 homes; 370 are primary residences , 1 is a secondary home
- Also threatening privately owned power infrastructure, agricultural crops, and endangered species in the area
- Mandatory evacuations in effect for 1,292 people

State / Local Response:

- WA at Partial Activation (Fire Season)

FEMA / Federal Response:

- FMAG approved August 19
- Region X / Bothell MOC will continue to monitor
- FEMA NWC will continue to monitor in coordination with Region X.



FEMA

Wildfire Summary

Fire Name (Co., ST)	FMAG #	Acres Burned	Percent Contained	Evacuations	Structures (Homes / Other)			Fatalities / Injuries
					Threatened	Damaged	Destroyed	
Lost Horse Creek (Fairbanks North Star Borough, AK)	5473-FM-AK	9,505	21% (+5)	M: Lifted	H: 0	H: 0	H: 0	0 / 2
				V: 0	O: 0	O: 0	O: 0	

(Evacuations: M = Mandatory / V = Voluntary; Structures: H = Homes and Mixed Commercial/Residential / O = Non-residential Commercial/Other Minor Structures)



FEMA

FEMA Common Operating Picture

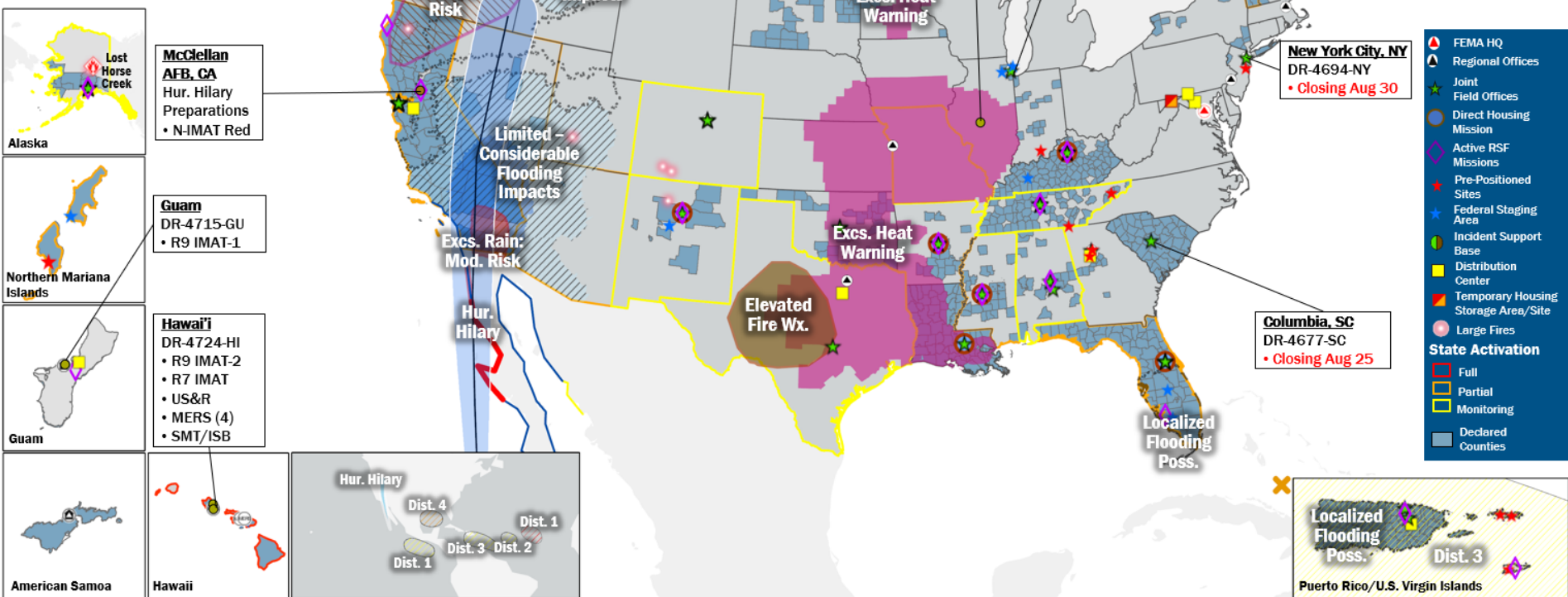
17 + 8 Joint Field Offices Virtual Joint Field Offices Supporting
72 + 0 Major Disasters Emergency Declarations
7 Direct Housing Missions **18** RSF-Supported Disasters

Saturday August 19, 2023 8:30 a.m. ET

FEMA HQ		
NWC	NRCC	
Monitoring	Activated	
FEMA REGIONS		
Watch	RRCC	
Monitoring	I	Rostered
Monitoring	II	Rostered
Monitoring	III	Rostered
Monitoring	IV	Rostered
Monitoring	V	Rostered
Monitoring	VI	Rostered
Monitoring	VII	Rostered
Monitoring	VIII	Rostered
Monitoring	IX	Rostered
Monitoring	X	Rostered
Notes:		
RWC/RRCC: - NRCC: (8:00 am - 8pm) Multi-Hazard Preparations - Central/Eastern Pacific/Atlantic	State EOCs: - AL/KY/MO/MS/TN/TX: Severe Weather - FL: TC Ian - AK/CA/KY/NV/VT: Flooding - CO: Avian Influenza, Public Health Support, and Suncor Refinery - AZ/CO: SW Border Coordination - AK/HI/NM/WA: Wildfires - CNMI: Typhoon Mawar - CA: Excessive Heat	
Surge Capacity Force		
Rostered 7,218	Deployed 0	

N-IMATs	
2-5 Teams Available	
Red	CA
White	
Blue	
Gold	
HS	Training
R-IMATs	
≥ 7 Teams Available	
I	VT
II	
III	1
IV-1	Personnel
IV-2	Personnel
V	IL
VI-1	
VI-2	
VII	HI
VIII	2
IX-1	GU
IX-2	HI
X	Personnel

REGIONAL BREAKDOWN			
	JFO/VJFO	DR	EM
I	3/0	8	0
II	1/2	5	0
III	0/0	0	0
IV	7/1	18	0
V	1/1	3	0
VI	4/1	7	0
VII	0/0	0	0
VIII	0/1	6	0
IX	0/1	16	0
X	1/1	9	0



IM Workforce

13,575 (-2) Assigned
 4,486 (+188) Unavailable
 6,476 (+295) Deployed

19% (-4) / 2,613 (-485) Available

IM Cadre Availability

16 Cadres ≤ 25% Availability

Civil Rights: 11% (16/141); Disability Integration: 5% (3/56); Disaster Survivor Assistance: 6% (70/1,179); External Affairs: 12% (58/501); Environmental Planning and Historic Preservation: 17% (134/810); Field Leadership: 12% (16/135); Hazard Mitigation: 16% (202/1,251); Human Resources: 14% (23/170); Interagency Recovery Coordination: 22% (64/294); Information Technology: 23% (148/642); Logistics: 16% (239/1,515); Operations: 11% (38/345); Public Assistance: 6% (139/2,177); Planning: 8% (39/463); Safety: 1% (1/80); Security: 11% (15/139)

MERS

≥ 66%

36 Assigned
 0 Unavailable
 3 (+2) Deployed

33 (-2) Available

US&R

≥ 66%

28 Assigned
 1 Unavailable
 5 Deployed

22 Available

FCO

≤ 1 Type I

48 Assigned
 8 Unavailable
 37 (+1) (23 (-1) FCOR) Deployed

3 (-1) Available

Joint Preliminary Damage Assessments

Region	State / Location	Incident	IA	Number of Counties		Start - End
			PA	Requested	Complete	
I	NH	Flooding Jun 17 and continuing	IA	0	0	N/A
			PA	10	0	7/24 - TBD
	CT	Flooding Jul 9-10	IA	0	0	N/A
			PA	1	0	8/9 - TBD
	VT	Flooding Aug 3-8	IA	0	0	N/A
			PA	2	0	8/21 - TBD
III	PA	Flooding Jul 15-16	IA	2	2	8/2 - 8/10
			PA	2	0	8/2 - TBD
IV	KY	Severe Weather, Heavy Rainfall, and Heat Events Jul 18-21	IA	0	0	N/A
			PA	5	4	8/17 - TBD
		Severe Storms and Tornado Aug 7 and continuing	IA	1	0	8/22 - TBD
			PA	11	0	8/22 - TBD
V	IL	Severe Storms and Flash Flooding Jun 29 - Jul 2	IA	1	1	7/24 - 7/28
			PA	14	0	7/24 - TBD



FEMA

Joint Preliminary Damage Assessments

Region	State / Location	Incident	IA	Number of Counties		Start - End
			PA	Requested	Complete	
VII	MO	Severe Storms and Flooding Jul 29 and continuing	IA	0	0	N/A
			PA	31	0	8/15 - TBD
	KS	Severe Storms and Flooding Jun 27 and continuing	IA	0	0	N/A
			PA	31	0	TBD
X	AK	Glacier Outburst Flooding Juneau Aug 4-6	IA	1	0	8/23 - 8/25
			PA	1	0	8/23 - 8/25



FEMA

Declaration Request – Kentucky

Declaration Type: Major Disaster – Kentucky

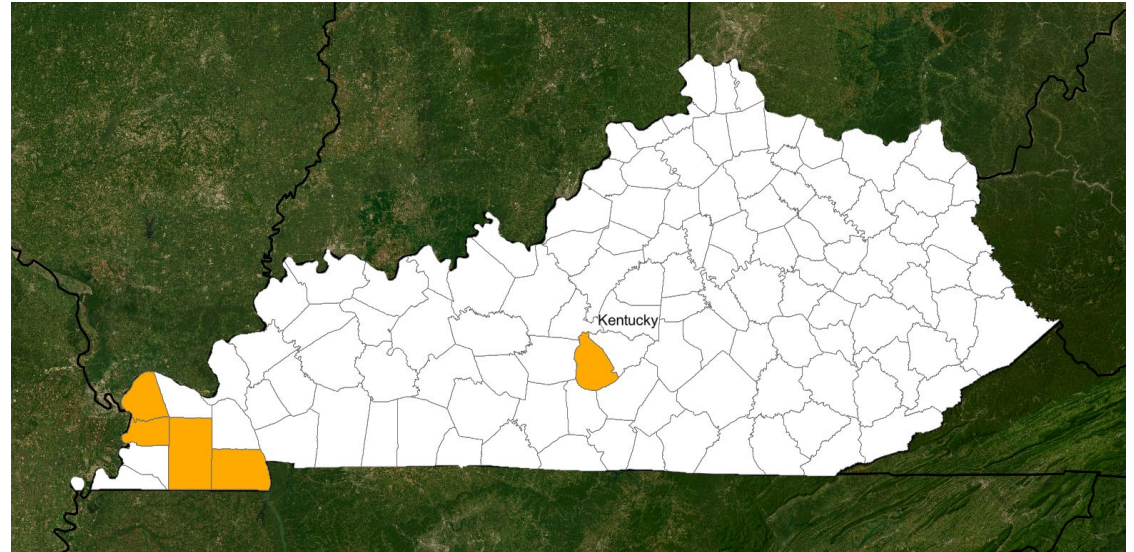
Requested: August 18, 2023

Incident: Severe Storms, flooding, straight-line winds, and tornadoes

Incident Period: July 17-20, 2023

Requested:

- **IA:** 5 counties



■ IA



FEMA

Declaration Requests in Process – 13

State / Tribe / Territory – Incident Description	Type	IA	PA	HM	Requested
MI – Flooding	DR		X	X	Jun 15
OH – Train Derailment	DR	X	X	X	Jul 3
CO – Severe Storms, Tornadoes, and Flooding	DR		X	X	Jul 27
NH – Severe Storms, and Flooding	DR		X	X	Jul 28
PA – Severe Storms, Straight-line Winds, and Flooding	DR	X	X	X	Jul 31
AK – Flooding	DR	X	X	X	Aug 1
WY – Flooding	DR	X	X	X	Aug 1
IA – Flooding	DR		X	X	Aug 3
Burns Paiute Tribe – Severe Storms, Flooding, Landslides, and Mudslides	DR		X	X	Aug 10
UT – Flooding	DR		X	X	Aug 11
ME – Severe Storms and Flooding (Jun 26)	DR		X	X	Aug 16
ME – Severe Storms and Flooding (Jun 29)	DR		X	X	Aug 16
KY – Severe Storms, Flooding, Straight-line Winds, and tornadoes	DR	X			Aug 18



FEMA



FEMA

Helping people before, during, and after disasters.



Scan to subscribe to this briefing.