

FEMA National Watch Center

Daily Operations Briefing

Thursday, July 8, 2021

8:30 a.m. ET



FEMA

National Current Ops / Monitoring

New Significant Incidents / Ongoing Ops

- Partial Building Collapse – Surfside, FL
- Tropical Storm Elsa Response
- Texas Gulf Coast Flooding

Hazard Monitoring

- Severe thunderstorms possible – Northern/Central Plains; coastal Carolinas
- Heavy rain and flash flooding – Southern Plains; Southeast to Northeast
- Critical Fire Weather – Central Great Basin to Northern Rockies
- Tropical Activity:
 - Atlantic: Tropical Storm Elsa

Disaster Declaration Activity

- Amendment No. 1 to FEMA-4598-DR-MS
- Amendment No. 1 to FEMA-3561-EM-FL

Event Monitoring

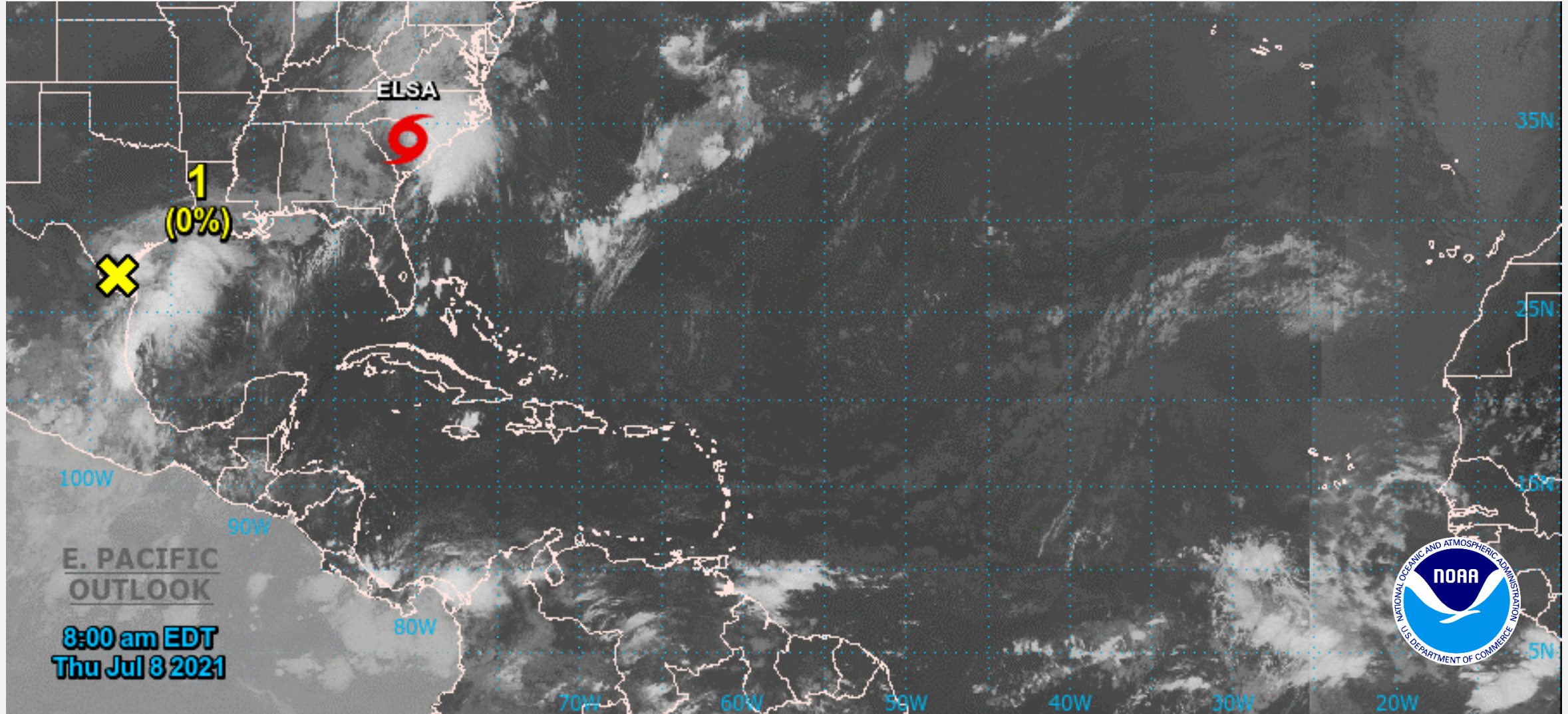
- None



FEMA

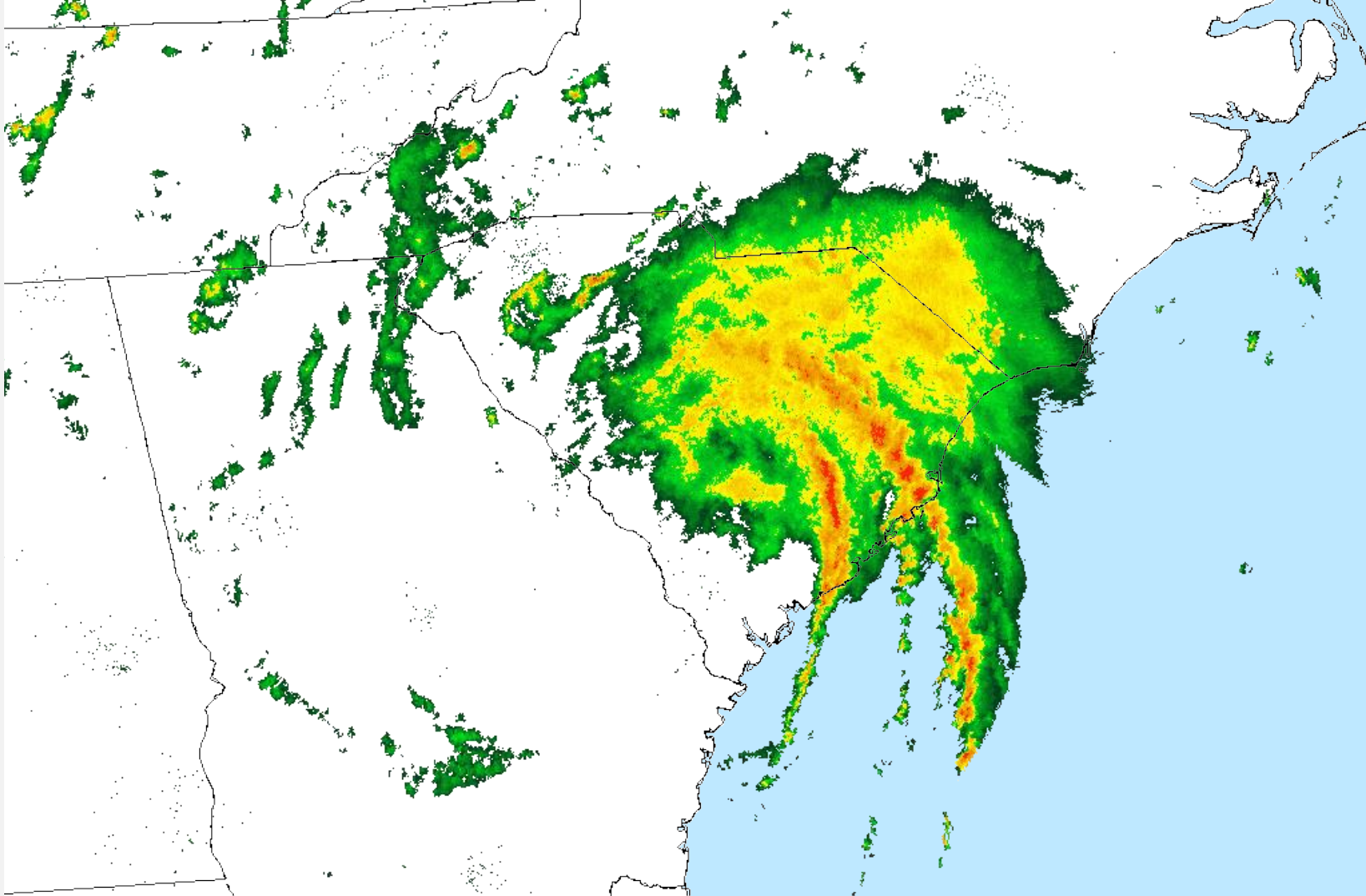
Atlantic Overview

TROPICAL OUTLOOK



Tropical Storm Elsa

RADAR LOOP



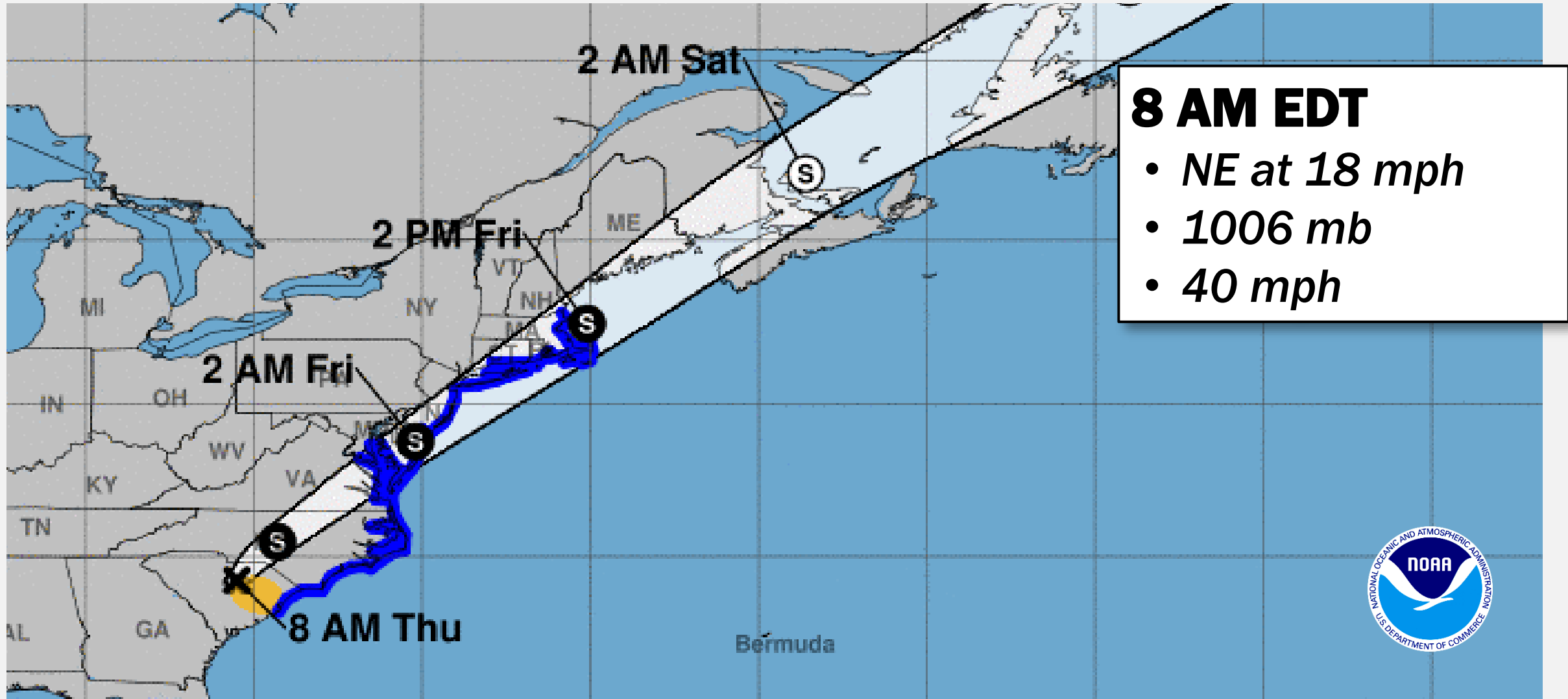
8 AM EDT

- *NE at 18 mph*
- *1006 mb*
- *40 mph*



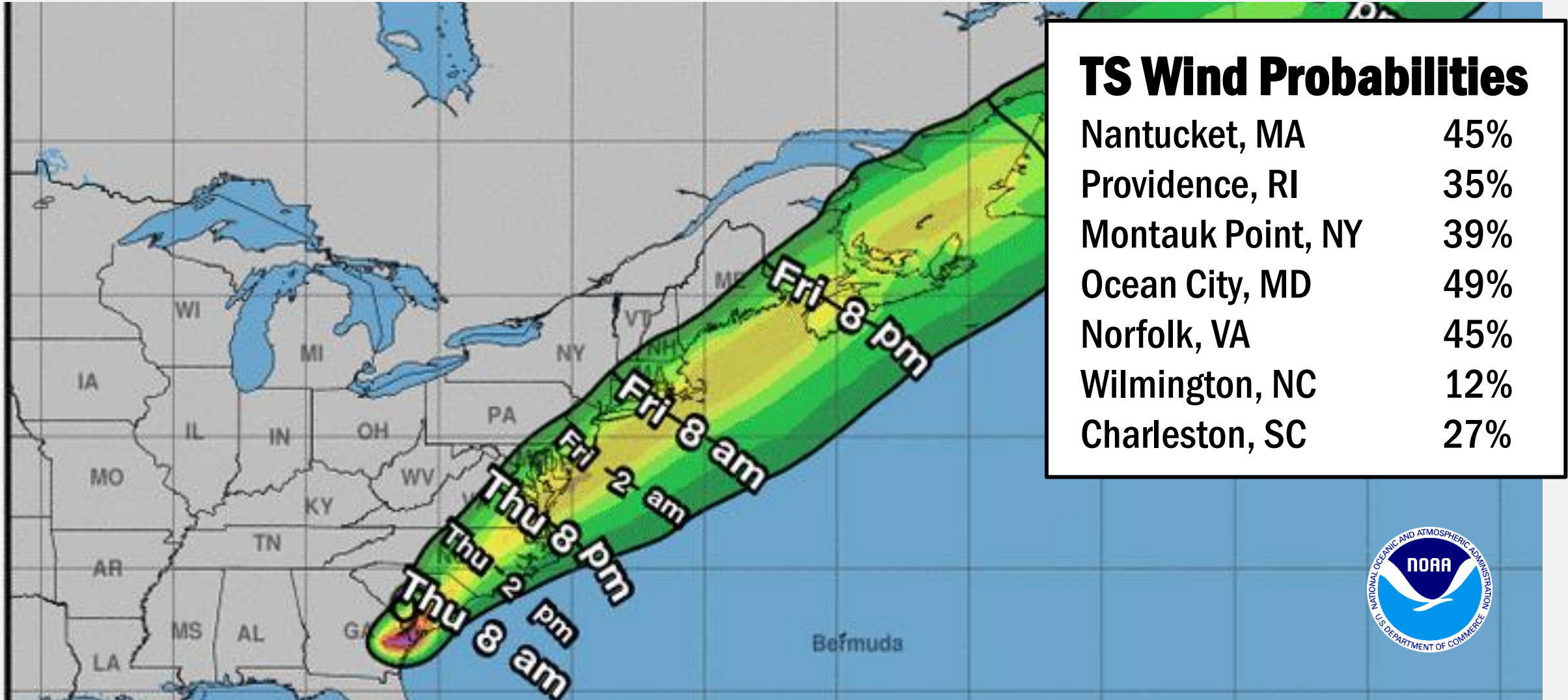
Tropical Storm Elsa

FORECAST TRACK



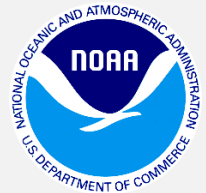
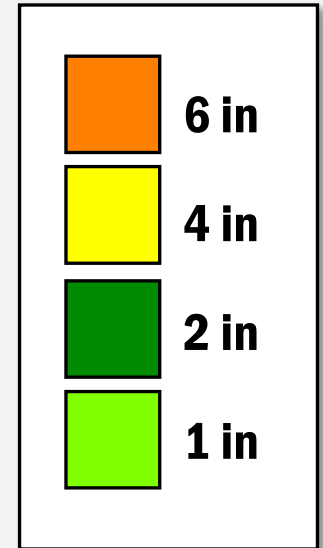
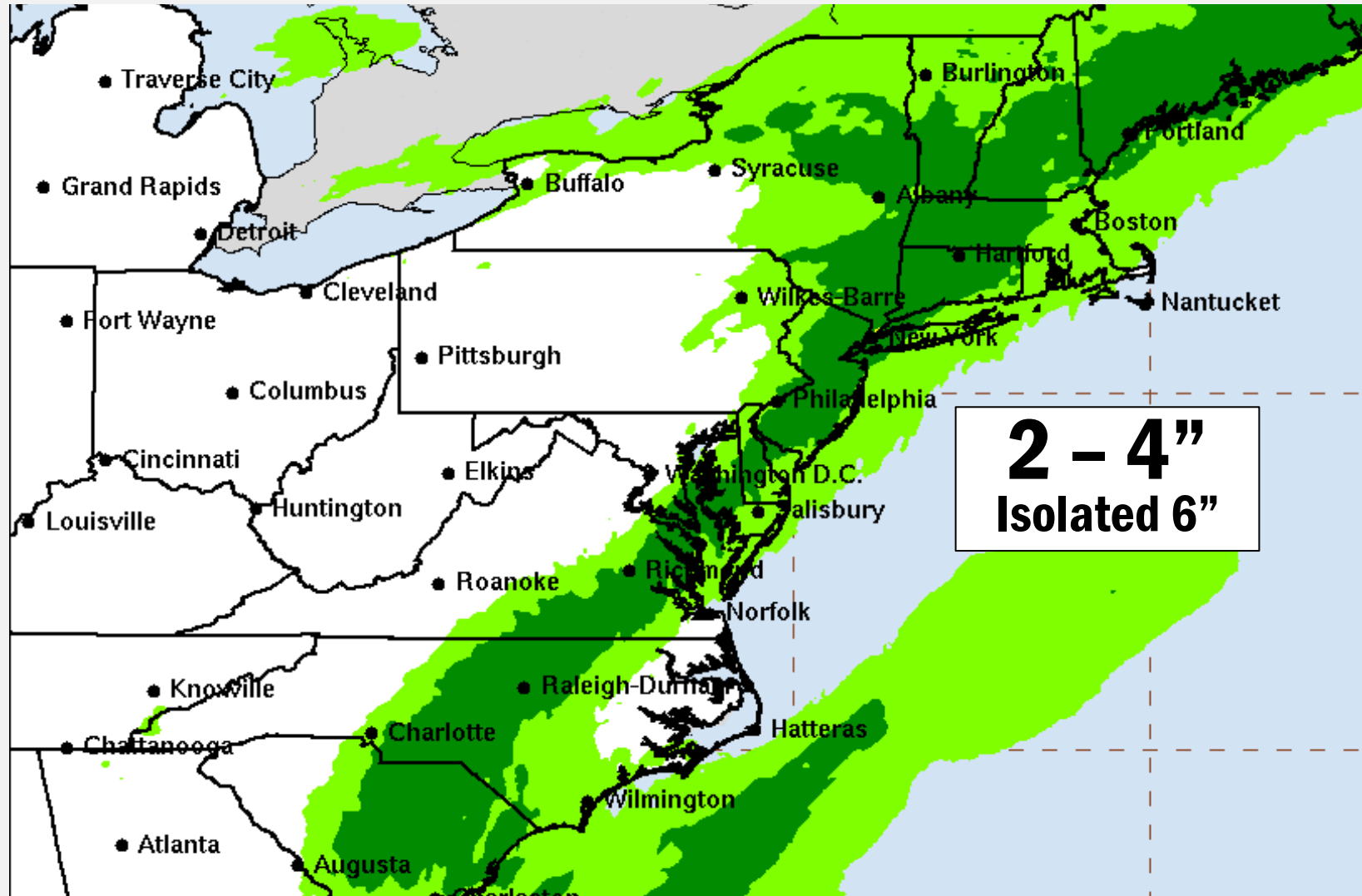
Tropical Storm Elsa

MOST LIKELY ARRIVAL OF TS WINDS



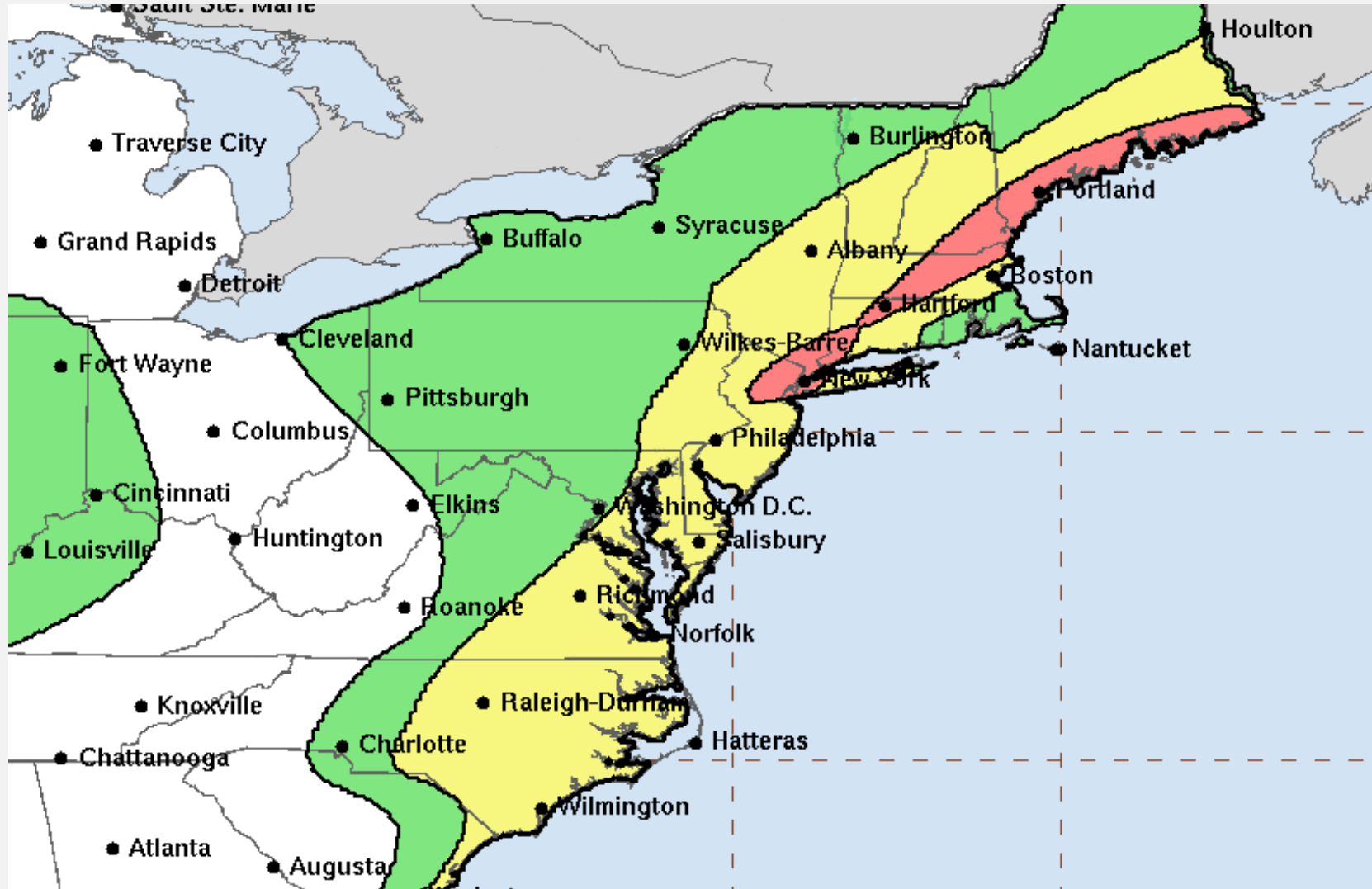
Tropical Storm Elsa

2 DAY RAINFALL



Tropical Storm Elsa

FLASH FLOOD POTENTIAL



Risk of Flash Flooding

Marginal

Moderate

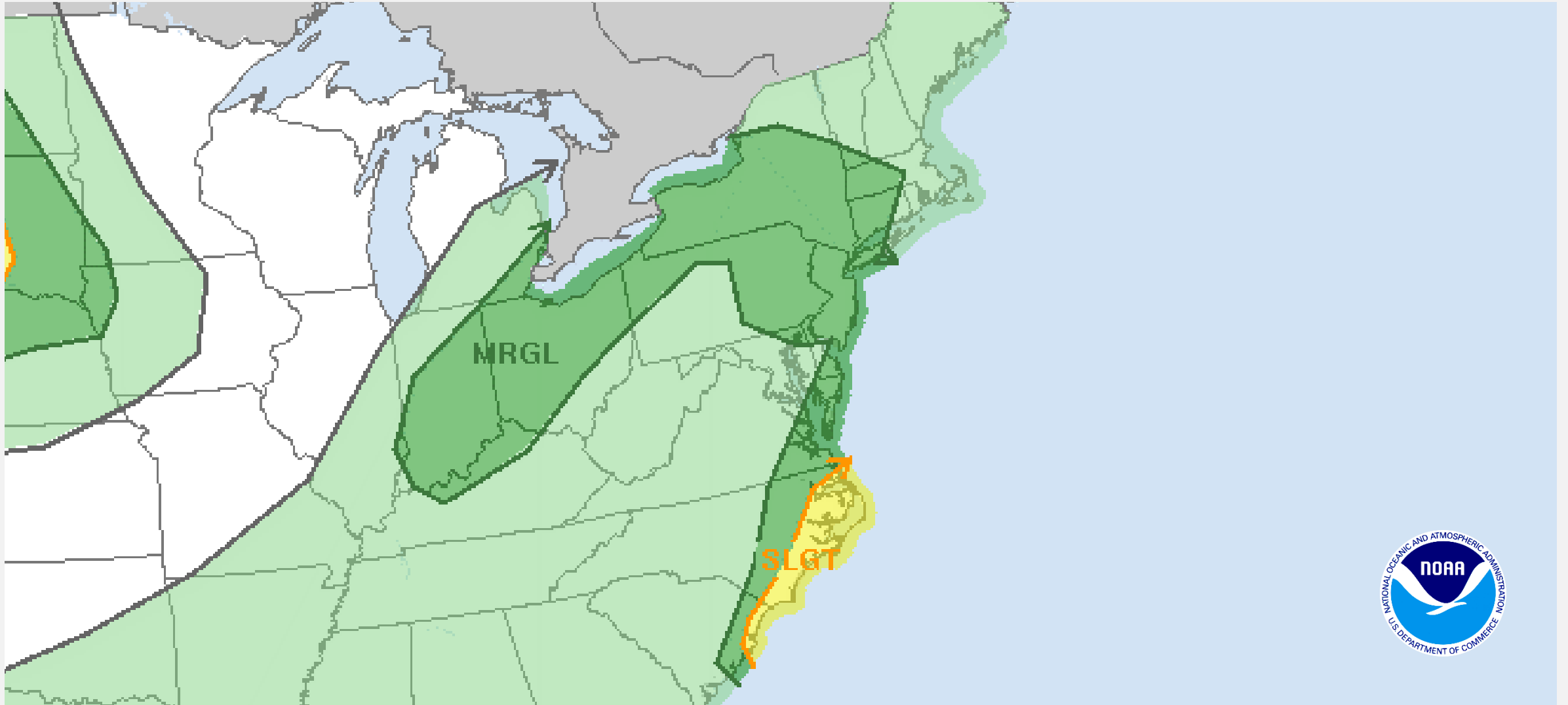
Slight

High



Tropical Storm Elsa

DAY 1 CONVECTIVE OUTLOOK



East Pacific Overview

TROPICAL OUTLOOK



Central Pacific Overview

TROPICAL OUTLOOK



Tropical Storm Elsa



Current Situation: Elsa will move over South Carolina and North Carolina today, pass near the eastern Mid-Atlantic states by tonight, and move near or over the Northeast on Friday and Friday night.

Lifeline Impacts Safety & Security:

- Evacuations lifted in FL

Food, Water, Shelter:

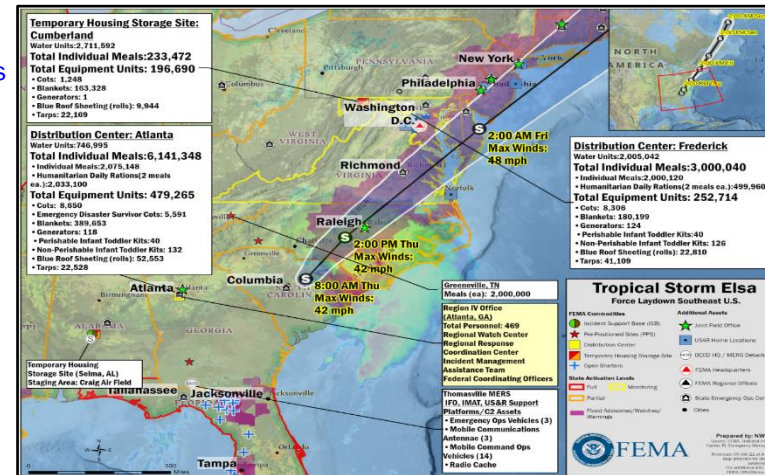
- 5 (-15) shelters open with 15 (-211) occupants in FL (ARC Midnight Shelter Count as of 7:09 a.m. ET)

Energy:

- FL & GA: Minimal power outages.
- SC: 99k customers (3%) without power statewide (DOE Eagle-I 6:30 a.m. ET)

Transportation:

- Major transportation corridors and evacuation routes are expected to remain open with some impacts to local roads



State / Local Response:

Florida:

- FL EOC at Full Activation (TC Elsa and Surfside Building Collapse)
- Governor signed a state of emergency for 33 counties
- 60 FL National Guardsmen staged in central FL

Tribal Nations:

- Seminole Tribe of Florida (STOF) tribal EOC activated; Chairman declared a state of emergency

Georgia:

- GA EOC at Partial Activation (TC Elsa and COVID)
- Governor signed a state of emergency for 92 counties
- State pre-staged commodities across the state

South Carolina:

- SC EOC at Normal Operations; monitoring; no anticipated change in posture

North Carolina:

- NC EOC at Partial Activation (TC Elsa and COVID-19)
- No anticipated federal support requirements

FEMA / Federal Response:

Region IV:

- RWC at Enhanced Watch; RRCC members on alert
- IMAT-2 on stand-by to deploy to the FL state EOC
- 1 Response LNO and two FIT members deployed to FL EOC; 1 LNO deployed virtually to GA EOC; 2 LNOs on standby to deploy to SC and NC EOC
- Hurricane Liaison Team member deployed to the NHC

FEMA Headquarters:

- NWC at Enhanced Watch (Day shift only)
- Emergency Declaration FEMA-3561-EM-FL approved
- Region V IMAT is immediately available for deployment
- FOD: Recommending FCO and IMAT assignments for potentially impacted States
- Logistics: Staging Team-ATL and Incident Support Base (ISB) Team deployed to Craig Field, AL
- US&R: 2 national teams on alert for potential deployment; Red IST placed on two-hour deploy order
- DEC MERS: Identifying and sourcing requirements
- ESFs: Coordinating potential requirements
- CISA: Protection Security Advisor (PSA) deployed to FL EOC



FEMA

National Watch Center

Partial Building Collapse – Surfside, FL



Current Situation:

Response operations have now transitioned to recovery

Lifeline Impacts: (EM-3560-FL Daily Snapshot, as of 8:00 a.m. ET, July 8)

Safety & Security: 86 (-23) individuals remain unaccounted for

Food, Water, Shelter: ARC: 18 hotel rooms sheltering 31 survivors (ARC Midnight Shelter Count as of 7:00 a.m. ET July 8)

Health & Medical: 11 injuries / 54 (+18) fatalities

FEMA / Federal Response

- Region IV RWC at Enhanced Watch (Tropical Cyclone Elsa); IMAT-1 deployed to FL; RRCC rostered and available
- Initial Operating Facility (IOF) established; Emergency Declaration FEMA-3560-EM-FL approved; COOP procedures in effect for IOF personnel due to TC Elsa
- Deployed FEMA Resources: Total Staff- 114 (101 deployed; 13 pending check-in)
- US&R
 - 3 structural engineers (1 demobilized); 1 Incident Support Team (IST) (38 system/3 FEMA personnel)
 - 5 Type-1 US&R TFs: VA-TF2, OH-TF1, PA-TF1, IN-TF1, and NJ-TF1
 - 5 Mission Ready Packages (10 structural engineers): NY-TF1, VA-TF1, MD-TF1, CA-TF 5 & 7
 - 2 Type-1 TFs (TX-TF1 & NY-TF1) on alert
- 4 FEMA LNOs deployed to FL; 2 from US&R, 1 from FIMA, and 1 from Region IV
- ESF #15 (External Affairs): Team Leader; MERS personnel and equipment
- Individual Assistance (IA) registration intake opened; IA staff on-site; 93 (+2) registrations, 31 funeral registrations complete
- 8 (+1) Requests for Public Assistance (RPA) received; 3 RPAs eligible, 5 (+1) pending
- USACE: ESF #3 Team Leader, 3 Geotechnical/Structural Safety Specialists, & 2 Debris SMEs onsite
 - All Structural Specialists established monitoring stations after the controlled implosion on the large rubble pile to ensure safety



State / Local Response:

- FL EOC at Partial (COVID-19);
- Governor declared State of Emergency; Miami-Dade County signed a Local State of Emergency
- FDEM IMT demobilizing over half of its IMT to return to the state EOC for Elsa response; will deploy a second IMT following TC Elsa response
- FL US&R: TF1 & 2 onsite; TF3-8 demobilized/reconstituting; Crisis Response Team mobilized
- Evidence material: out of approximately 19,700 cubic yards (CY) of debris from the collapsed portion of the building, 6,526 (+1,806) CY have been removed (approximate total for the entire building is 50k CY)



FEMA

National Watch Center

Flooding - Texas



Current Situation:

- Heavy rainfall (10-15 inches) with locally higher amounts possible along Texas coastline, mainly between Corpus Christi and Victoria
- Widespread flash flooding possible for the middle to lower Texas coast
- Moderate to major river flooding likely
- Flash Flood Warnings and Watches are in effect

Lifeline Impacts:

Safety & Security:

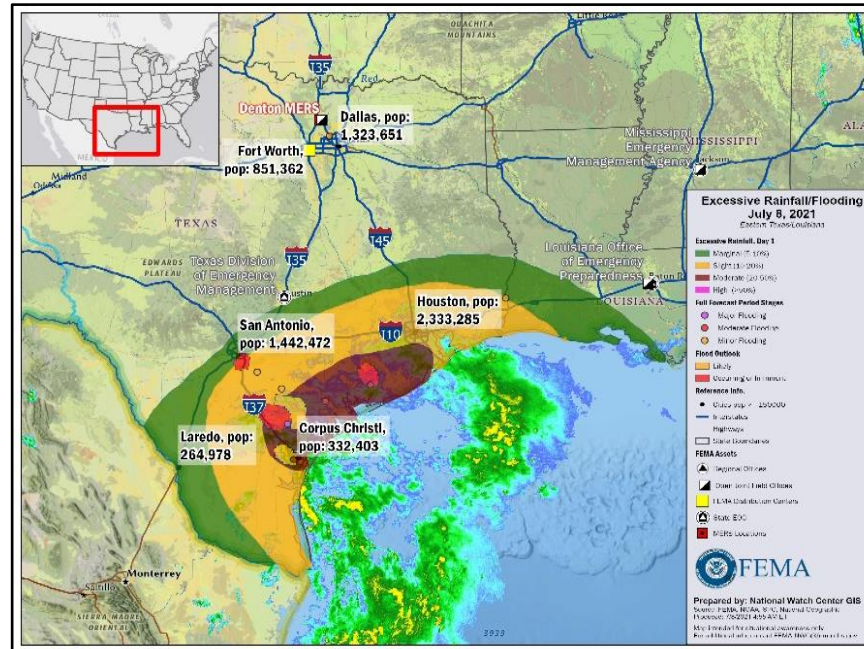
- Several high-water rescues in Rockport, TX
- Evacuations of low-lying areas possible
- Possible damage to homes
- Reservoirs are well-positioned for storage
- River impacts may take several days to react to runoff from several days of rain

Food, Water, Shelter:

- 1 shelter open with no occupants (ARC Midnight Shelter Count as of 7:09 a.m. ET)

Transportation:

- Multiple roadways in city of Rockport are impassable



FEMA / Federal Response:

- Region VI / Denton MOC continue to monitor; RRCC at Level III (COVID-19); IMAT-1 and IMAT-2 are available
- Region VI staff collocated at TX EOC, will continue to coordinate with the state
- NWC continues to monitor

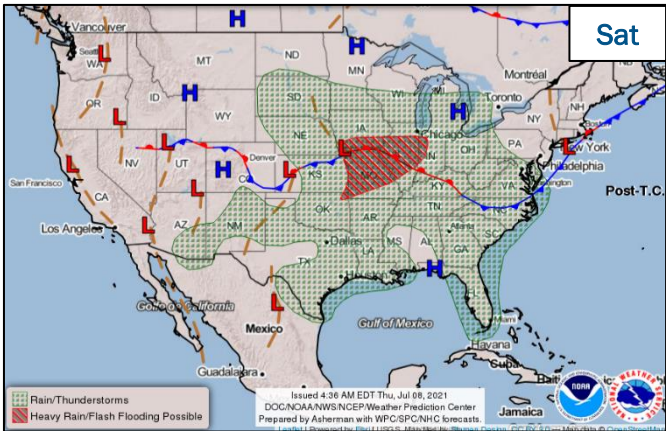
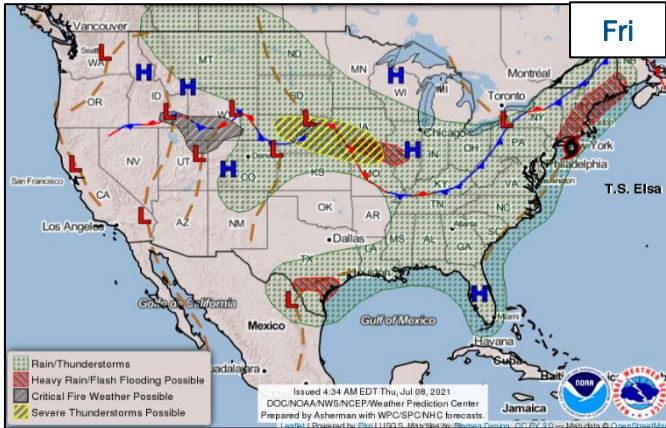
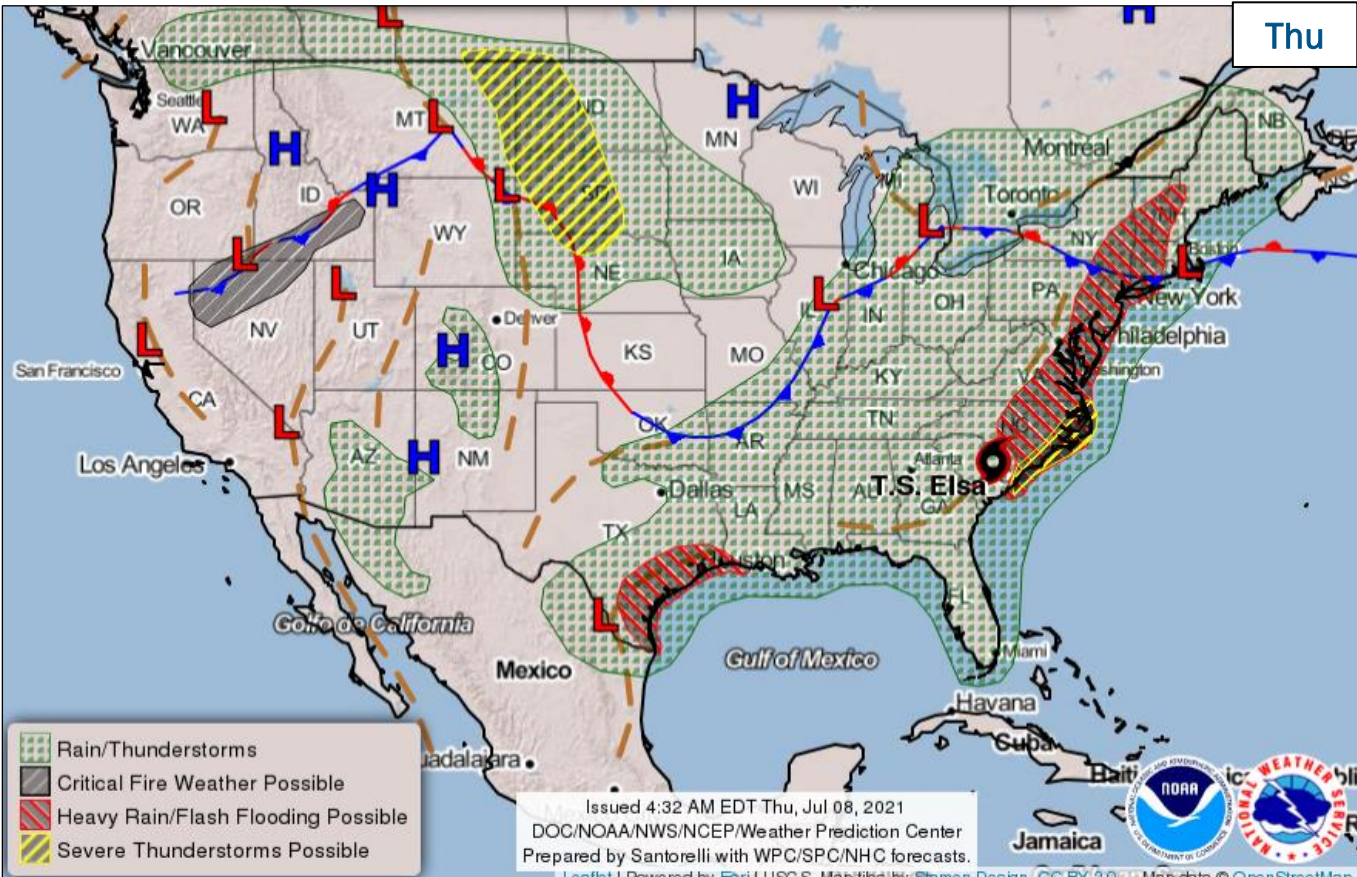
State / Local Response:

- TX EOC at Partial Activation (COVID-19)
- State assets, including water rescue boats, and crews are available
- No requests for FEMA assistance



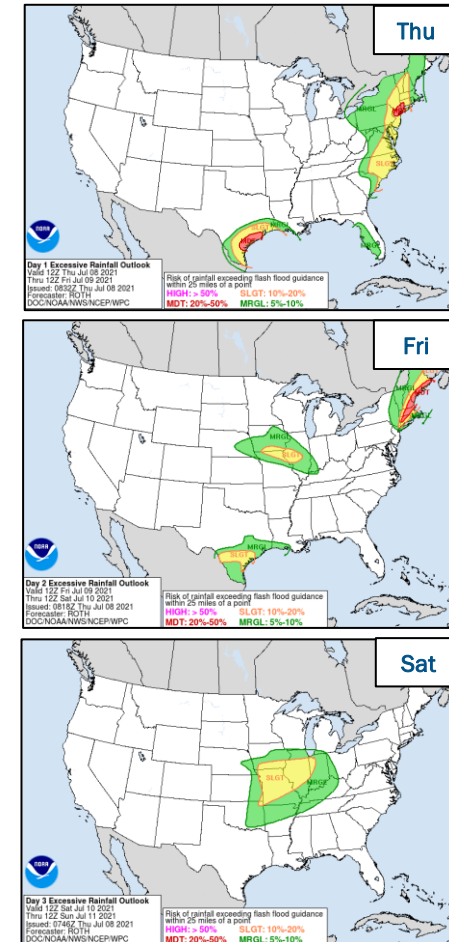
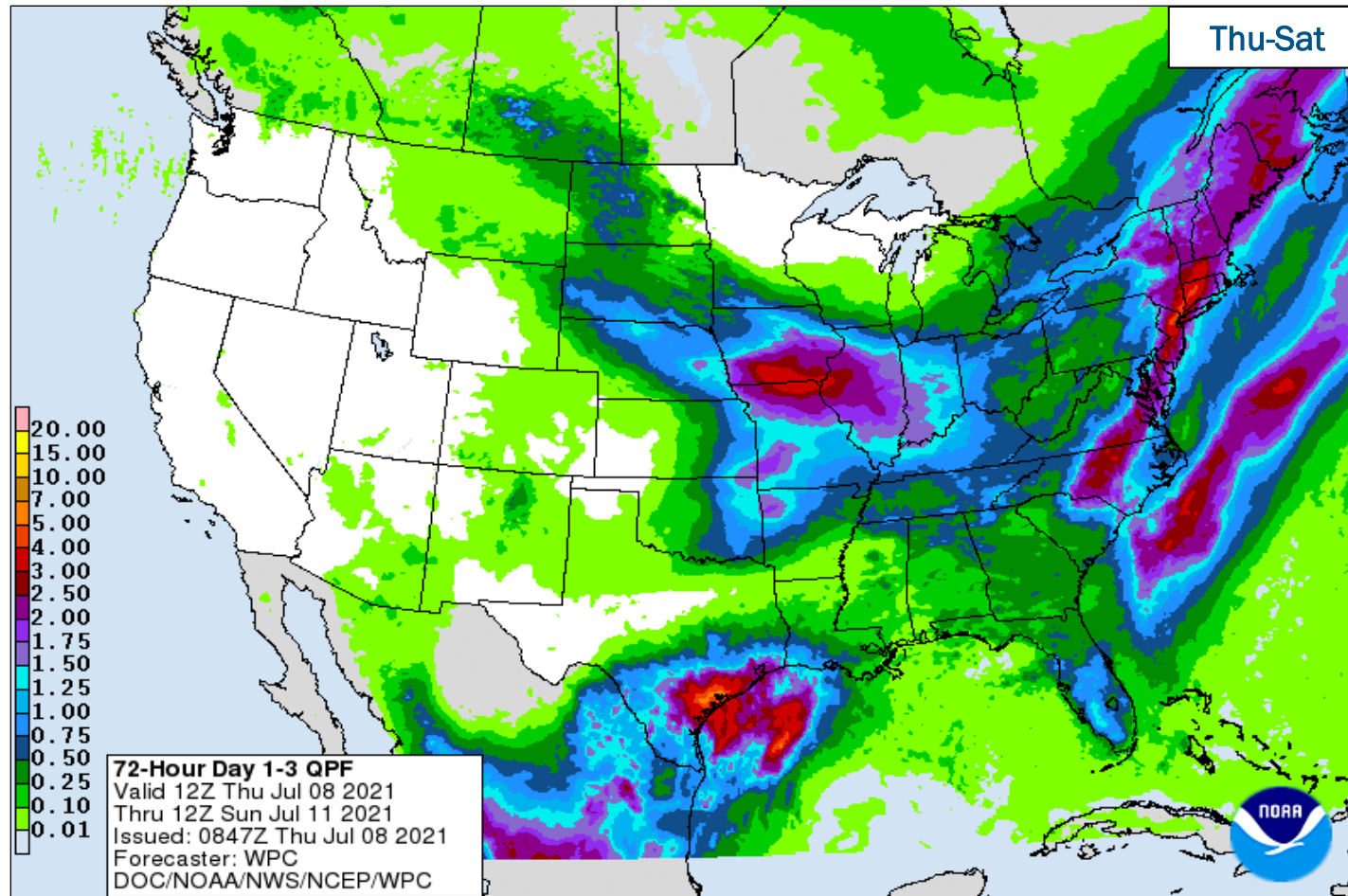
FEMA

National Weather Forecast



FEMA

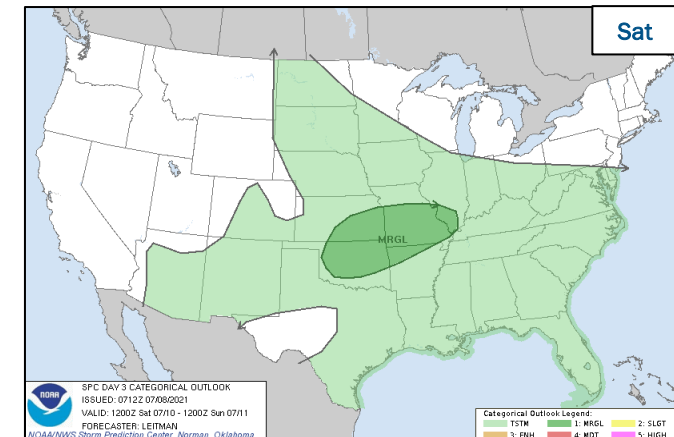
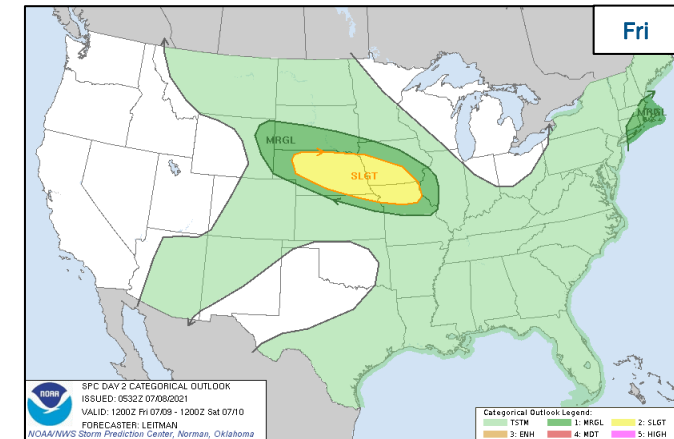
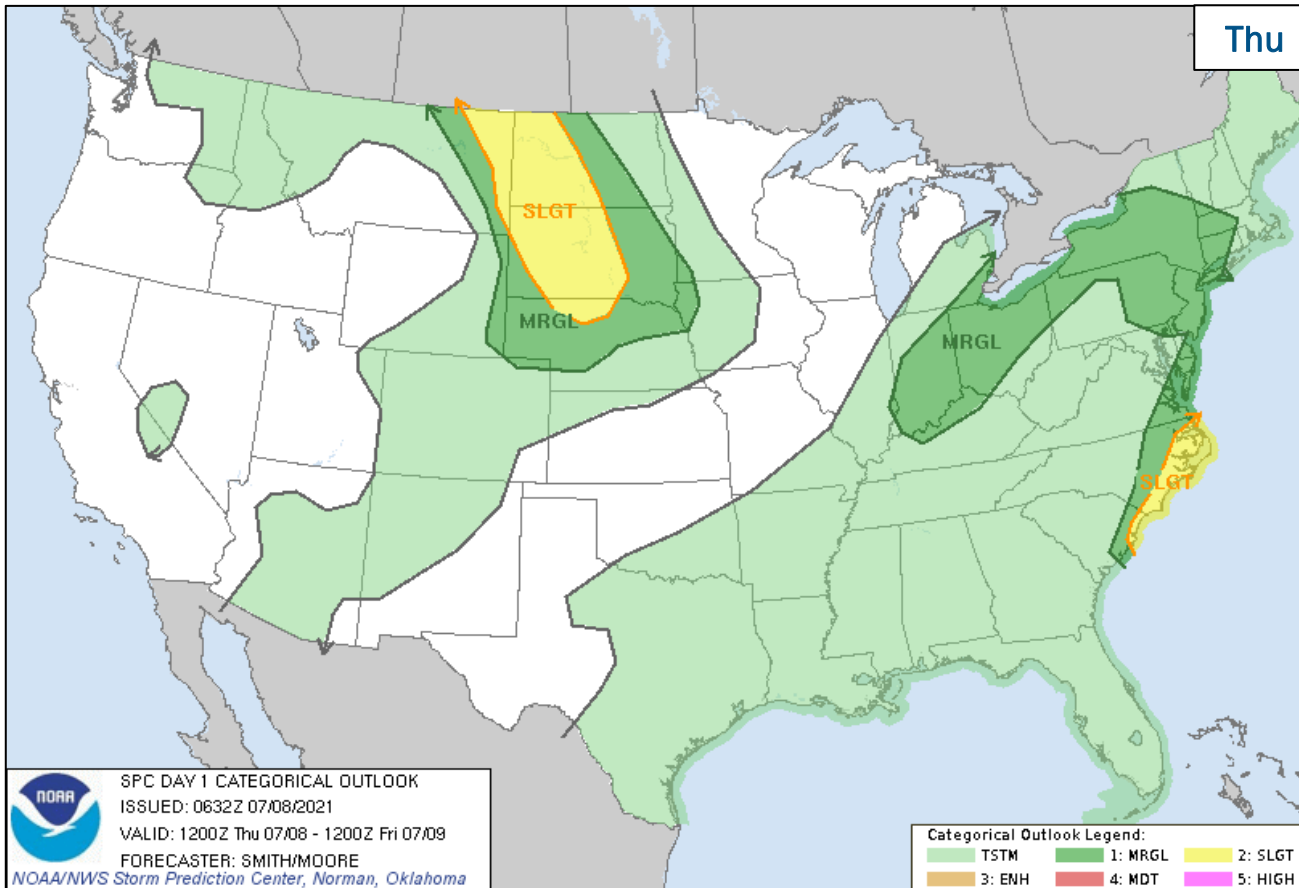
Precipitation & Excessive Rainfall



FEMA

National Watch Center

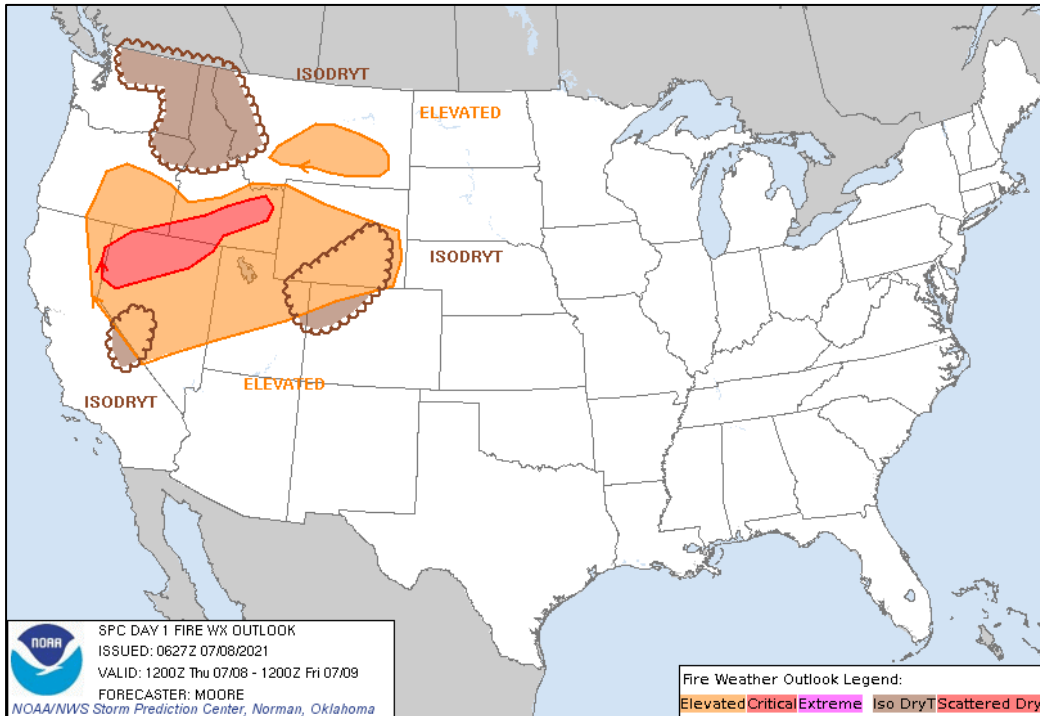
Severe Weather Outlook



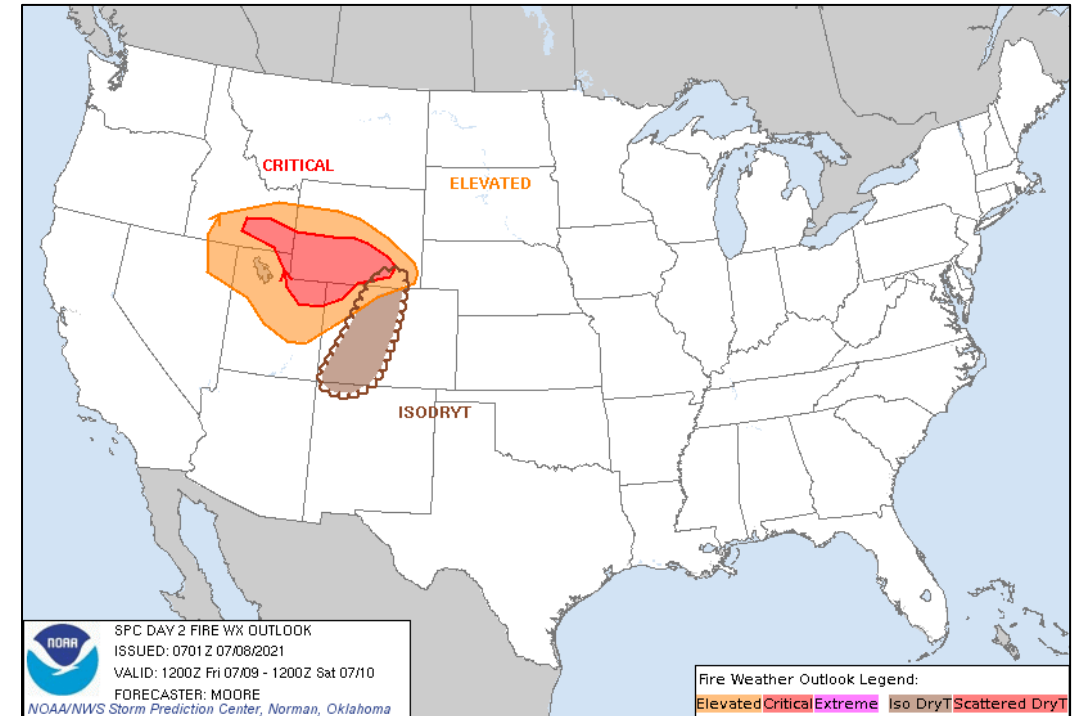
FEMA

National Watch Center

Fire Weather Outlook



Today



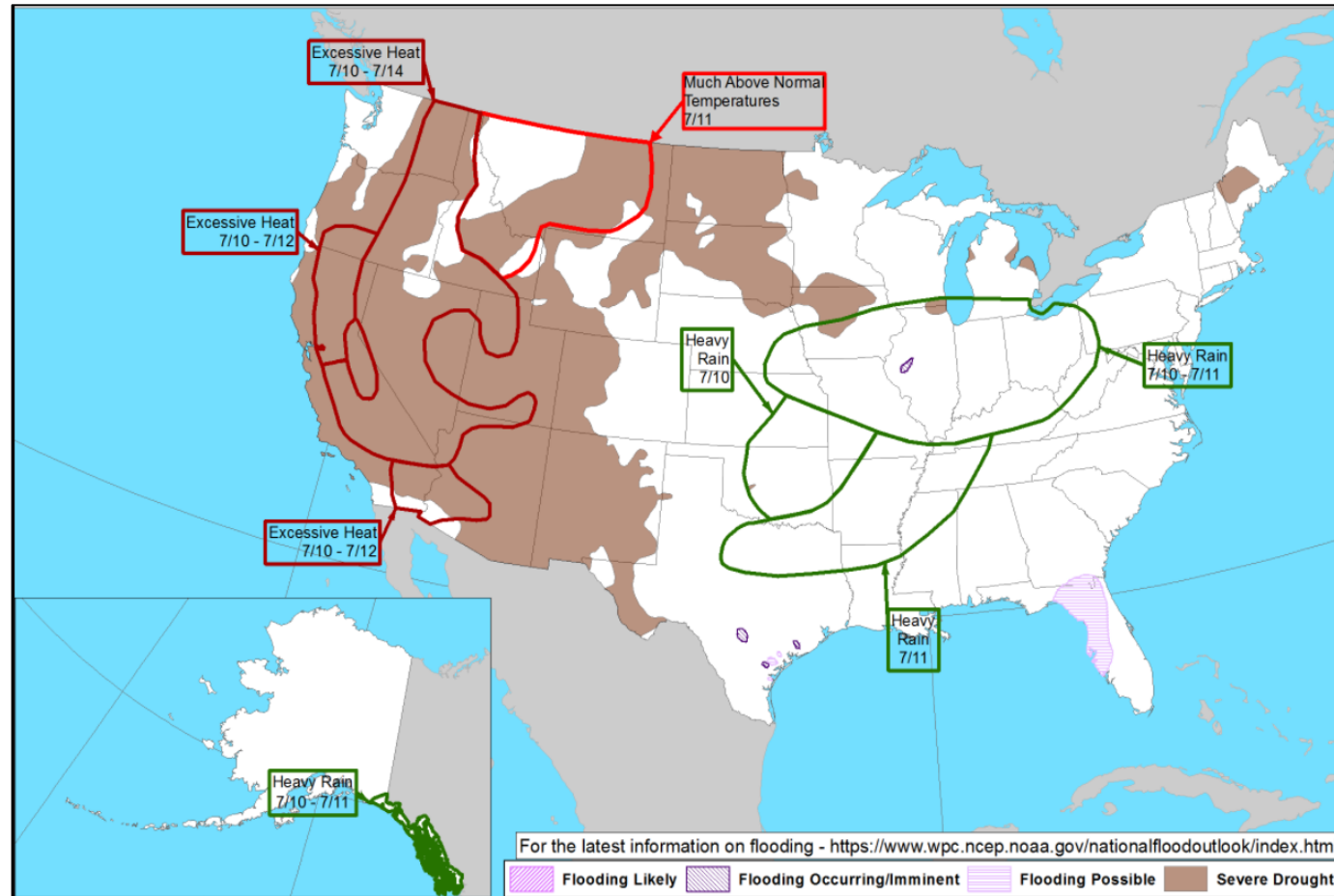
Tomorrow



FEMA

National Watch Center

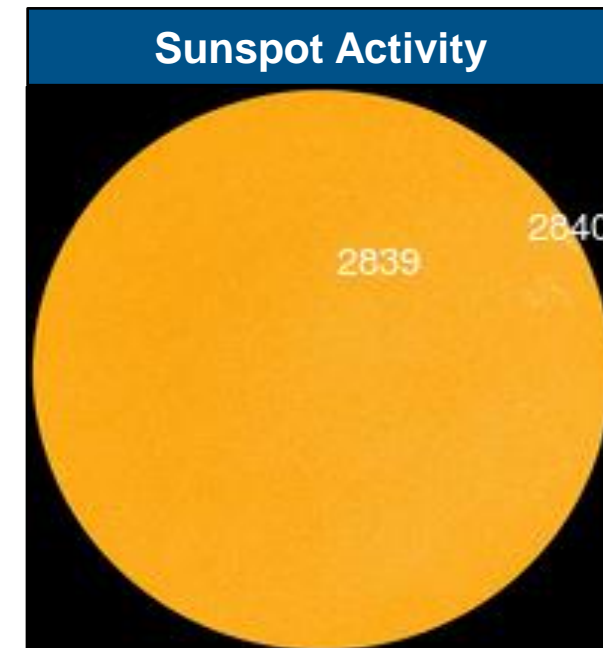
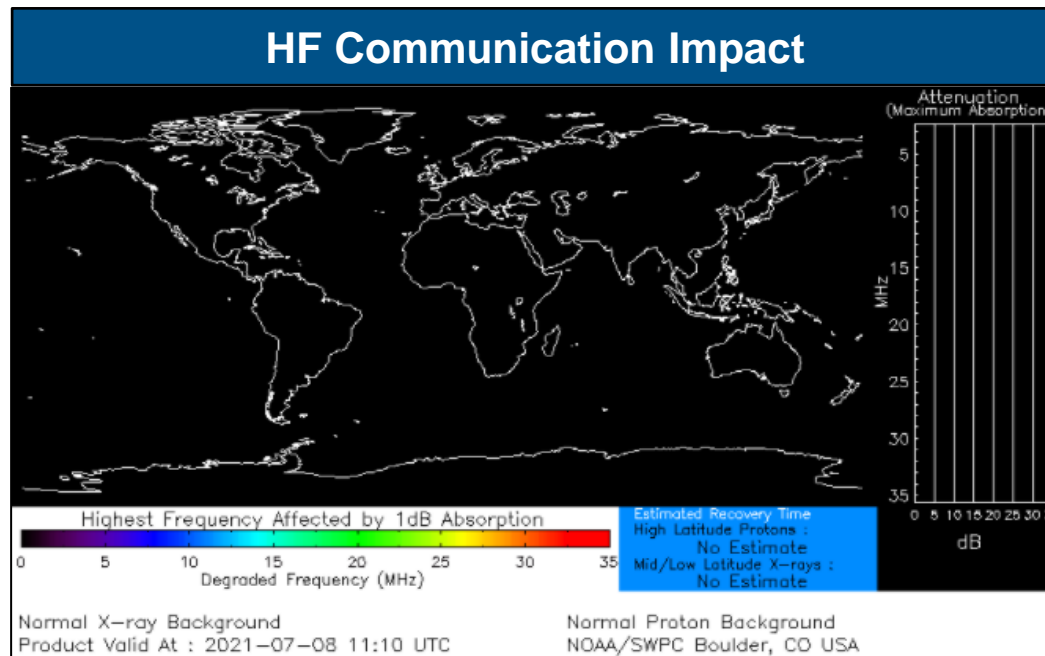
Hazards Outlook – Jul 10-14



FEMA

Space Weather Outlook

	Space Weather Activity	Geomagnetic Storms	Solar Radiation	Radio Blackouts
Past 24 Hours	None	None	None	None
Next 24 Hours	None	None	None	None
For further information on NOAA Space Weather Scales refer to: http://www.swpc.noaa.gov/noaa-scales-explanation For further information on Sunspot Activity refer to: https://www.swpc.noaa.gov/phenomena/sunspotssolar-cycle				



FEMA

National Watch Center

Wildfire Summary

Fire Name (County, ST)	FMAG #	Acres Burned	Percent Contained	Evacuations	Structures (Homes / Other)			Fatalities / Injuries
					Threatened	Damaged	Destroyed	
Andrus (Spokane, WA)	5395-FM-WA	232 (-68)	30% (+30)	M:0	H: 24	H: 0	H: 0	0 / 0
				V: 0	O: 0	O: 0	O: 0	

(Evacuations: M = Mandatory / V = Voluntary; Structures: H = Homes and Mixed Commercial/Residential / O = Non-residential Commercial/Other Minor Structures)

Joint Preliminary Damage Assessments

Region	State / Location	Event	IA	Number of Counties		Start – End
			PA	Requested	Complete	
V	MI	Severe Weather and Flooding Jun 25-26	IA	2 (+1)	0	7/8 – TBD
			PA	3	0	7/8 – TBD
VII	MO	Severe Weather Jun 19-Jul 1	IA	0	0	N/A
			PA	17	0	7/8 – TBD
VIII	MT	Severe Storms Jun 8-10	IA	0	0	N/A
			PA	5	0	6/21 – TBD
	ND	Severe Storms Jun 8-11	IA	0	0	N/A
			PA	9	0	7/6 – TBD



FEMA

Declaration Requests in Process – 1

State / Tribe / Territory – Incident Description	Type	IA	PA	HM	Requested
WY – Severe Winter Storms (Appeal)	DR		X	X	7/2



FEMA

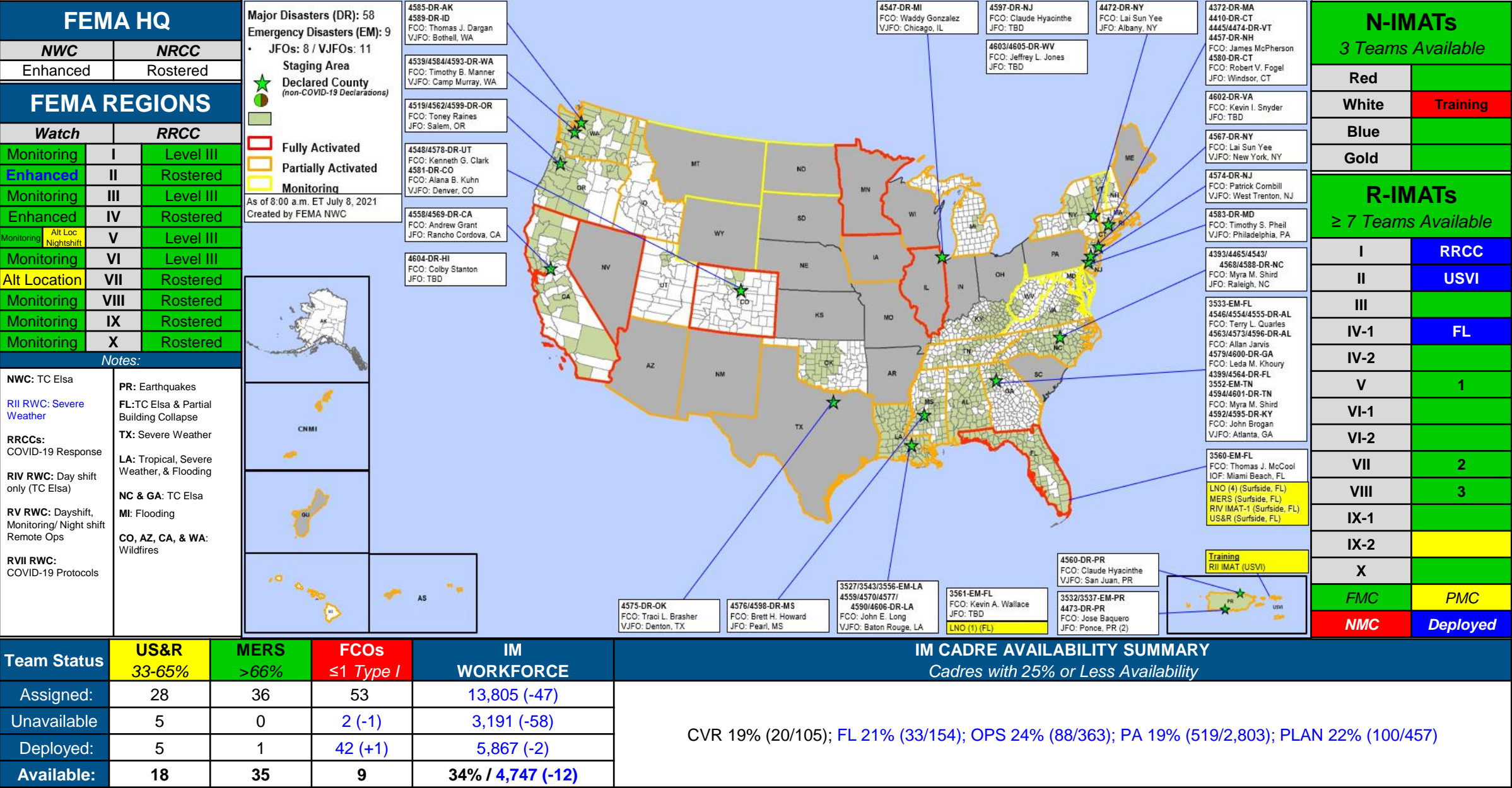
Declaration Amendments

Declaration	Number	Issued	Action
4598-DR-MS	1	July 7	Adds 5 counties for Public Assistance
3561-EM-FL	1	July 7	Adds 15 counties for Emergency Protective Measures (Category B) limited to direct Federal assistance for mass care including evacuation and shelter support



FEMA

FEMA Common Operating Picture





FEMA

Helping people before, during, and after disasters.



Scan to subscribe to this briefing.